



THE CLARENDON Enterprise

08.15.2013

The Texas Panhandle's First Newspaper.
Established 1878.

THE CLARENDON NEWS & THE DONLEY COUNTY LEADER

www.ClarendonLive.com

Single
Copy \$1.00

THIS WEEK

- 2 Fred says Obamacare really isn't all that bad for America after all.
- 4 Think you're getting a government grant? It may be a scam, Bob says.
- 5 Texas Rangers gathered at the grave of Col. Goodnight to place a new memorial.
- 6 And the Green family has Christmas in August.

All this and much more as *The Enterprise* reports in this week's amazing edition!

Babcock asks court to review decision

An attorney for convicted child killer Robert Babcock is asking an appeals court to take a second look at the case.

The Donley County Clerk's office says Babcock's attorney filed a motion for discretionary review on July 12 with the Seventh Court of Appeals in Amarillo. The motion came less than one month after the court upheld the decision of a Hall County jury that found Babcock guilty of killing his four-year-old son, Chance Mark Jones, and sentencing him to life in prison.

District Attorney Luke Inman says the defense's next course will likely be to the Texas Court of Criminal Appeals, but the DA remains confident that the trial court's decision will hold.

"We prepare all of our trials to minimize the number of issues that can be raised on appeal," Inman said. "The Babcock trial was no different and at least one appellate court has agreed with the trial court's rulings and judgment in affirming the case."

"I am confident that this case will not get overturned, and Chance's justice will stay in place which resulted in the life sentence of his killer."

Local groups giving free school supplies

The First United Methodist Church, the Lila Kate Memorial Fund, and Christ's Kids Outreach Ministries will be giving out basic school supplies for Pre-K through Junior High on Friday, August 16, from 2 to 4 p.m. at the Christ's Kids Ministries Center, 416 South Kearney.

Filing continues for vacant city seats

Filing for three vacant positions on the Clarendon Board of Aldermen continues through August 26, and only one candidate had signed up at press time.

Larry Jeffers filed to run for one of the two positions that expire in May 2014. Another vacant seat expires in May 2015.

Aldermen are elected at-large, but candidates must specify whether they wish to run for the vacant term which expires in May 2015 or one that expires in 2014.

Local veteran to be honored in Pampa

A Clarendon man is among six individuals who will be inducted into the Panhandle Hall of Honor at the Freedom Museum USA in Pampa next week.

George W. Howard of Clarendon will be joined by Bill Owens of Wellington, Edgar Lee Hawkins of Lamesa, William M. Sims of Pampa, Dempsey Malaney of Perryton, and Homer Thomas of Canadian.

The induction will be August 17 and will be held at the Pampa Veterans of Foreign Wars Post 1657 in Pampa at 6 p.m. and will be preceded with a barbecue dinner. Tickets will be \$15 for individuals and \$25 for couples.

•••

Proposed wind farm seeks tax abatement

By Roger Estlack, Clarendon Enterprise
Cielo Wind Services and Donley County officials this week moved closer to tax abatement agreement 161-megawatt wind farm that is proposed for the northwestern part of the county.

During the regular session of the commissioners' court, the county approved a letter of engagement with the Underwood Law Firm and met with attorney James Wester, who presented local officials with updated tax abatement guidelines and criteria. Commissioners voted to accept those guidelines and adopted

a resolution continuing the county's interest in participating in tax abatements.

Cielo representative Robert Peña presented county officials with a tax abatement application and said the project will be constructed in 2014 and operational in 2015.

The proposed wind farm will be split between Gray County and Donley County, and Peña said his company intends to put 161-megawatts of turbine capacity in Donley County using 2.0 to 2.2 megawatt turbines.

According to Cielo's applica-

tion, the project will bring approximately 150 to 200 construction jobs and seven full-time permanent jobs to Donley County. The market value of the project would be about \$95 million, and the project expects to generate about \$1 million in direct sales taxes.

The company proposes a 100 percent tax abatement for ten years, but Peña said that direct payments in lieu of taxes were not spelled out in the application and needed to be discussed in a closed session of the court.

Commissioners agreed to hold

a public hearing on September 9 to create a reinvestment zone for Cielo and consider the terms of the tax abatement.

The proposed project area does not fall in the Clarendon Independent School District, Peña said. The project would be within the Clarendon College District and the Donley County Hospital District, but Peña said Cielo does not ask college or medical districts for tax abatements.

In other county business, commissioners worked late Monday to work on their proposed budget for fiscal year 2014. That budget is now

on file with the clerk's office, and budget hearings will be held September 13 and 19.

Commissioners also approved several agenda items, including the purchase of a computer system for the county attorney; collection of optional fees as provided by the Texas Department of Motor Vehicles Transportation Code; attendance by the county attorney at a conference in Galveston; attendance by the county clerk at a conference in Horseshoe Bay; and acceptance of a bid on tax delinquent property in Howardwick.



Emergency personnel respond to a two-vehicle accident east of Clarendon Monday where a Childress man lost his life.

ENTERPRISE PHOTO / ROGER ESTLACK

Accident claims life of Childress man

A Childress man lost his life Monday afternoon in a two-vehicle accident east of Clarendon.

Department of Public Safety Trooper Daniel Hawthorn said Johnnie Lee Lott was driving a 2012 Cadillac SRX in the outside lane of eastbound US 287 at 3:25 p.m. There was heavy rain and

low visibility, and Lott stopped his vehicle in the outside lane and was struck from behind by a 2004 Ford F250 pickup driven by Teddy Joe Atwood, Jr., of Pampa.

Both vehicles ended up in the median with the pickup running into a pine tree.

Lott, age 77, was pronounced

dead at the scene at 3:56 by Justice of the Peace Denise Bertrand.

Lott's wife, 77-year-old June Hall Lott, was in the passenger seat and was hurt critically with internal injuries. She was transported to Northwest Texas Hospital in Amarillo. Mr. and Mrs. Lott were both wearing seatbelts at the time of

the accident.

Responding to the accident were personnel with the Department of Public Safety, Clarendon Volunteer Fire Department, Associated Ambulance Authority, Donley County Sheriff's Office, and the Texas Department of Transportation.



Light show

Lightning streaks across the Clarendon skyline August 8 in this image capture by a Samsung Galaxy S3 smart phone from Clarendon College looking toward the east as the storm left the city.

COURTESY PHOTO / BRITTON HALL / NWS CERTIFIED SKYWARN SPOTTER/KEFH RADIO

USDA extends CRP emergency grazing deadline

Donley County USDA Farm Service Agency (FSA) Executive Director Vance Killian has announced that the original Conservation Reserve Program (CRP) emergency grazing deadline has been extended to September 30, 2013.

The CRP emergency haying authorization was not extended and will expire on August 31, 2013. However, under this current authorization, producers are permitted to sell hay that is

harvested prior to August 31 as long as the hay was not sold from the same land under contract anytime during 2011 or 2012.

Producers who take advantage of the emergency grazing extension will not incur an additional CRP rental payment reduction, and through a recent FSA National Office initiative, the 25 percent CRP payment reduction is reduced to 10 percent for 2013 emergency grazing and haying authorizations.

If a producer chooses to

lease eligible CRP acres, the producer cannot profit on the lease agreement. The amount charged for lease of CRP emergency grazing acres cannot exceed the value of the rental payment reduction.

Texas CRP participants who were previously approved for managed grazing may elect to switch to emergency use by contacting the Donley County FSA office to request approval. The restrictive emergency use criteria must be met for each site to qualify

for the new emergency designation approval.

Based on a revised policy decision made by the Texas FSA State Committee, CRP acres grazed during fiscal year 2011 or 2012 will be considered eligible for emergency grazing if NRCS verifies, on a case-by-case basis, that the conservation cover will sustain grazing. CRP acres grazed in the fall/winter of fiscal year 2013 will not be eligible for spring/summer grazing. FSA's

See 'CRP' on page 10.

County orders elections for alcohol sales, city aldermen

Donley County Commissioners acted on two petitions Monday calling for county election on alcohol sales and a special election to fill vacancies on the Clarendon Board of Aldermen.

The Commissioners' Court first considered a petition with 547 verified signatures and voted 3-0-1 to order a Local Option Election to legalize the sale of all alcoholic beverages in the county, including mixed drinks. Judge Jack Hall and Commissioners Dan Sawyer and Andy Wheatly voted to accept the petition and order the election. Commissioner Donnie Hall abstained, and Commissioner Mark White was absent.

The court then considered the petition of 35 legal voters in the City of Clarendon asking the county to adopt a resolution ordering a special election, and the court voted 4-0 to accept that petition and order the election.

Both elections will be held Tuesday, November 5, 2013. Voters must be registered by October 5 to be eligible to vote.

Sales tax revenues up again

Donley County cities continued to enjoy higher sales tax revenues when Texas Comptroller Susan Combs made her August allocation last week.

The large increase in local sales has been attributed to a petroleum by-product pipeline crew that has been making its temporary home in the area.

After seeing growth of more than 40 percent each of the last two months, Clarendon's sales tax revenue for this month was up 23.62 percent compared to the same period in 2012. The city received \$44,009.31 compared to \$35,600.20 last August and is now running 26.04 percent ahead for the calendar year-to-date at \$276,214.96.

Hedley's revenue this month was up 46.57 percent at \$896.16 and is 44 percent higher for the year at \$4,964.40.

Howardwick has also seen some growth with revenue this month up 9.22 percent and an allocation of \$1,791.32. That city is up 3.7 percent for the year.

"Texas sales tax revenue has increased for 40 consecutive months," Combs said.

Combs said that statewide sales tax revenue in July was \$2.2 billion, up 7.3 percent compared to July 2012.

The sales tax figures represent monthly sales made in June as well as April, May and June sales by businesses that report tax quarterly.

Making rules that do harm

By Richard W. Rahn

Terrorists, money launderers, drug dealers and tax evaders use automobiles, airplanes, telephones, computers, banks and countless other goods and services that we all use. Yet all too many government policymakers think that if we make these things very difficult to use, the bad guys will go away – forgetting, of course, that all the rest of us suffer from mindless regulation and control. Banks and other financial service firms have become the targets of choice for the unthinking government class and its allies – because in popular culture, bankers are often cast as the evil villains, despite the fact that the world economy could not function without them.

Thirty years ago, the excuse for more financial services' regulation was that "drug dealers" used banks. That argument morphed into "banks facilitate money laundering," which was made a crime in the United States in 1986. Then after Sept. 11, 2001, that excuse evolved into "terrorists use banks." More recently, the justification for more rules has become "banks around the world enable businesses and individuals to avoid taxes." There are always new excuses for more regulation – but the demands are always the same: Banks must give more information about their customers and operations to government officials.

This assumes, of course, that the government officials will not share the information with competitors, not use it for political or personal purposes, nor allow it to fall in the hands of evil governments or the bad guys. As anyone who can read a newspaper knows, none of this is true.

Development experts have known for decades that the most effective foreign-aid program is private remittances. Millions of people have left poor countries to get jobs in rich countries.

Most of these people send money back home to their families – remittances – which enable their families to better their own lives and even start small businesses. They most often use money-transfer businesses, because the workers and the recipients do not have bank accounts, or they find that bank transfer fees are very expensive, particularly for the small amounts of money that are frequently sent. The unholy cabal of Treasury and finance ministries, tax collectors of major countries, the Organization for Economic Cooperation and Development, and the Financial Action Task Force are making it increasingly difficult for major banks to deal with the money-transfer service providers. They claim that drug dealers, money launderers, tax evaders and terrorists might use these services.

This is true in the same way criminals also might use telephones, pencils and paper. Bankers can be held criminally liable if one of their customers or even a customer's customer misbehaves, so they are fearful of serving many types of businesses. Under these criteria, the secretary of the Treasury should be sent to jail anytime a criminal uses U.S. dollar bills. If governments are nothing else, they're hypocritical.

The legitimate and properly regulated money-transfer businesses cannot exist without corresponding banking relationships. If they are shut down, money transfers will be driven underground and run by criminal operators moving cash in the same way they do drugs. For example, the whole banking structure collapsed in Somalia during the civil war, so there is no banking structure in the country. More than \$1.2 billion is remitted each year – by Somali workers who have left the country – through legitimate money-transfer services, accounting for more than half of Somalia's gross domestic product. Nongovernmental organizations such as Save the Children, CARE and other humanitarian groups also rely on money-transfer services.

If these companies are shut down, are the world's taxpayers, through official aid programs, going to make up the difference, or will the poverty worsen and create more terrorists?

The government class (particularly at the Treasury, Federal Reserve and Internal Revenue Service) is always in denial about the consequences of its actions. The same group that is undermining economic development in the Horn of Africa and many other poor regions is also promulgating a truly wicked and destructive regulation – which will make it too costly for many foreign financial institutions to service U.S. citizens and invest in the United States. This regulation, the Foreign Account Tax Compliance Act, will stop perhaps trillions of dollars of needed foreign investment from coming into the United States, costing millions of jobs and economic growth.

To be fair, it is not only the people at the IRS and Treasury who fail to think beyond Stage One and deliberately ignore sound cost-benefit regulation. The rocket scientists at the Food and Drug Administration last week decided that acetaminophen (Tylenol) must contain an additional warning label for Stevens-Johnson Syndrome – a rare skin disease that caused 12 deaths associated with acetaminophen (out of an estimated 1.3 trillion pills consumed over a 43-year period). That is one death per 100 billion pills. You are more likely to die by having a cow fall on you. Such an action unnecessarily scares people, many of whom will suffer far more by not taking Tylenol and similar products.

Those in government are unlikely to start considering the consequences of their actions until citizens are empowered to bring suits against those who act in such irresponsible ways.

Richard W. Rahn is a senior fellow at the Cato Institute and chairman of the Institute for Global Economic Growth.

Obamacare not all that bad really

Accompanied by wailing and gnashing of Republican teeth, Obamacare, better known as The Affordable Care Act, goes fully into effect at the beginning of next year, and Republican predictions of unmitigated disaster are being shouted from rooftops and mountaintops throughout the red lands of America. A full-blown GOP panic is leading to outrageous and silly attempts to "defund" the thing, which ain't gonna happen. Give me an Amen! Republicans frantically proclaim that there will be an administrative "train wreck," and, we're repeatedly told – *ad nauseum*; consumers will face a terrible shock, and the end of the world could be nigh. Republicans, according to "those who know," are already counting on the law's troubles to give them a big electoral advantage. Hm-mm?

Make no mistake about it, there will be problems, as there are with any large new government initiative, and in this case, we have the added complication that many Republican governors (including ours) and legislators (ours, too) are going the extra mile to do all they can to sabotage much needed reform. Even so, important new evidence – mainly from California, the law's most important test case – suggests that the real Obamacare shock will be one of unexpected success. Really? Really!

Before we go any further about this gospel of good health, and what it actually means, a crucial point needs to be made: Obamacare is, and always has been, a deeply conservative reform, not in a political sense (although it was, after all, originally a Republican proposal) but in terms of leaving most people's health care unaffected. Americans who receive health insurance from their employers, Medicare or Medicaid – which is the vast majority of those who have any kind of health insurance at all – will see almost no changes when the law goes into effect.

However, there are millions of Americans who don't have any insurance at all, either from their employers or from government programs. They can get insurance only by buying it on their own, and many of them are effectively shut out of that market. In some states, like California, insurers can reject

applicants with past medical problems. In others, like New York, insurers can't reject applicants, and must offer similar coverage regardless of personal medical history (using a "community rating" as a guide); unfortunately, this leads to situations in which premiums are very high because only those with current health problems sign up, while healthy people take the risk of going uninsured.

Obamacare closes this gap with a three-part approach. Firstly, community rating everywhere – which means no more exclusions based on pre-existing conditions. Secondly, the mandate (so often disparaged) – you must buy insurance even if you're currently healthy. Thirdly, adding subsidies to make insurance affordable for those with lower incomes.

Thanks to the Mittster, Massachusetts has essentially had this system since 2006; and, as a result, nearly all residents have health insurance. It must be noted that the program remains very popular. So there is evidence that Obamacare can work.

Skeptics argue, however, that Massachusetts was special: it had relatively few uninsured residents, even before the reform, and it already had community rating. What would happen elsewhere? More particularly, what would happen in California, where more than a fifth of the nonelderly population is uninsured, and the individual insurance market is largely unregulated? Would there be "sticker shock" as the price of individual policies soared?

Well, the California bids are in – the insurers have submitted the prices at which they're willing to offer coverage on the state's newly created Obamacare exchange. Surprisingly, the prices are really low! A handful of healthy and affluent young people may find themselves paying more for coverage, but it looks as if Obamacare's



the quick, the dead, & fred
by fred gray

first year in California is going to be an overwhelmingly positive experience. Imagine that.

Thanks primarily to the Republicans, things can still go wrong, especially if G.O.P. rascals are persistent and creative in their sabotage. Obamacare is a very complicated program, understood by no one (even our senators and representatives in Washington, DC, who passed the law – for heaven's sake!), primarily because simple options, like Medicare for all, weren't considered politically feasible. So, there will probably be a lot of administrative confusion as the law goes into effect, again especially in states where (does Texas ring a bell?) Republicans have been doing their best to sabotage the process.

Also, some people are too poor to afford coverage even with the subsidies. These Americans were supposed to be covered by a federally financed expansion of Medicaid, but in states where Republicans have blocked Medicaid expansion (once again, Texas), such unfortunate will be left out.

Even with all the problems, here's what is likely to happen: millions of Americans will suddenly gain health care coverage (happy, happy, happy), and millions more will feel more secure – knowing that such coverage is available if they lose their jobs or suffer other misfortunes – say like getting hit in the head by a wayward Perseid's meteorite. Only a few individuals will actually be hurt. And, as contrasts emerge between the experience of states like California that are making the most of the new policy and that of states like Texas (whose politicians are doing their best to act like the south end of north-bound mules), that are doing their best to undermine it, the sheer meanness of the Obamacare opponents will become ever more obvious.

Indeed, it does look as if there's an Obamacare shock coming; the shock of learning that a public program designed to help a lot of people can, it's strange to say, end up helping a lot of people, especially when our elected representatives actually try to make it work.

Imagine that, if you can.



Voter ID law will protect equality

In June, the Supreme Court held that Section 4 of the Voting Rights Act was unconstitutional. The provision, which determined the states and jurisdictions that would have to ask the Justice Department for permission to implement any voting law, was based on outdated data from the 1960s and '70s. The data came from an era of obscene racial discrimination that bears little resemblance to the reality of today. In the intervening years, Texas and other states have repudiated that sad and unjust era, and made great strides towards voter equality. In today's America, access to voting booths and voting information is broad and not subject to discrimination.

So the question must be asked: Why are President Barack Obama and his Attorney General, Eric Holder, so upset about this decision? The answer is as simple as it is disturbing: partisan politics.

Section 4 determined which states were subject to "preclearance," a procedure under which Texas – and other covered jurisdictions – had to seek permission for any change to voting law. Until the Supreme Court struck down Section 4 as unconstitutional, Texas needed permission from the Justice Department to implement even a change in a polling place. That arrangement was good for Eric Holder.

Take voter ID as an example. In

2011, Texas adopted a commonsense voter ID law. It requires voters to present one of a number of approved forms of photo ID at the polling place,

just like you have to do to buy beer or get on a plane. The state offers voter ID cards free of charge. And the law allows voters unable to present a valid photo ID to cast a provisional ballot and return within a week with proper identification. It even makes exceptions for people who have a religious objection to being photographed or lost their ID as a result of a recent natural disaster.

The law is reasonable, and it is popular. Protecting the integrity of the voting process is something that benefits everyone. The Supreme Court has held that voter ID laws are constitutional. But Section 4 subjected Texas to preclearance, giving Holder the ability to block Texas from implementing the law – which he did.

After the Supreme Court struck down Section 4, the Justice Department wasted no time announcing that it would file a lawsuit in federal court demanding that preclearance be reinstated over



texas times
by sen. john corry

Texas under a rarely used provision of the Voting Rights Act. The Justice Department accused the State of Texas of "intentional discrimination" against minority voters.

That accusation is offensive, has no real basis, and will not stand up in court. It will come as no surprise to Texans that if Section 4 had been updated to rely on current data, Texas would no longer be subject to the preclearance requirement.

And consider the current facts on voter turnout: According to a Census Bureau report, 68.2 percent of registered Hispanic voters in Texas went to the polls in the 2000 general election. By 2012, with an additional 747,000 Hispanic Texans on the electoral roll, the rate had risen to 71.2 percent. Meanwhile, the rate for African-American Texans rose to over 86 percent in the same period – the highest among all racial groups tracked in the Census Bureau report.

Unfortunately, these facts mean little to a politicized Justice Department bent on inserting itself into the sovereign affairs of Texas. As Texans, we reject the notion that the federal government knows what's best for us. We deserve the freedom to make our own laws and we deserve not to be insulted by a Justice Department committed to scoring cheap political points.

The Clarendon Enterprise (USPS 947040, ISSN 1088-9698) is published each Thursday by Roger A. Estlack at 105 S. Kearney Street, Clarendon, Texas 79226-1110. Periodicals postage paid at Clarendon, Texas 79226-1110. Copyright © 2013. All rights reserved.

This paper's first duty is to print all the news that is fit to print, honestly and fairly to all, unbiased by any consideration even its own editorial opinion.

Any erroneous reflection upon the character, standing, or reputation of any person, firm, or corporation which may occur in the columns of The Clarendon Enterprise will be gladly corrected upon being brought to the attention of the management.

ENTREPRENEUR STAFF

Roger A. Estlack
Publisher & Editor

Ashlee Estlack
Contributing Editor

Tara Hogan
Office Director

Morgan Wheatly
Ads & Layouts

CORRESPONDENTS

Peggy Cockerham
Howardwick

Sandy Anderberg
Clarendon Sports

Fred Gray
College & Hedley Sports

Karl Lindsey
Photographer

Matthew Martinez
Photographer

Kathy Spier
Hedley

CONTACT INFORMATION

Phone
806.874.2259

Fax
806.874.2423

E-Mail
news@clarendononline.com

Web Site
www.ClarendonLive.com

ADVERTISING

Open Display rates are \$5 per PASS column inch. Classified Ads are \$8 for the first 15 words and 15¢ per word for each additional word (Boxes or special typography are extra.). Thank You Notes are \$10 for the first 40 words and 15¢ per word for each additional word. Basic engagement, wedding, anniversary, and birth announcements are \$10 each. Expanded wedding announcements are \$20. A one-column announcement picture is \$5, and a two-column announcement picture is \$10. Pictures submitted for publication should be picked up within ten days after publication.

DEADLINES

News articles and photos are due by Monday at noon. Advertising and Classifieds are due by five o'clock Monday afternoon. Deadlines may be altered for holidays or special issues.

SUBSCRIPTIONS

Annual subscriptions are available for \$29 for zip codes inside Donkey County, \$39 elsewhere in Texas, and \$44 out of state. POSTMASTER: Send all address changes to: The Clarendon Enterprise, PO Box 1110, Clarendon, TX 79226-1110. Digital Subscriptions are \$14.95 per year.

LETTERS

Letters to the editor are welcome. Views expressed in letters are those of the writers and do not necessarily reflect the views of the editor or staff of The Clarendon Enterprise. Submission of a letter does not guarantee publication. Letters may be edited for grammar, style, or length. All letters must be signed and must include an address and telephone number for verification. To improve your chances of publication, type and double space your letter, stick to one main topic, and keep it brief. No letters will be accepted from candidates for local political offices. Letters submitted to this newspaper become the property of The Enterprise and cannot be returned.

The Texas Panhandle's First Newspaper

THE CLARENDON NEWS, established June 1, 1878 with which have merged: The Clarendon Traveler, February 1889; The Clarendon Journal, November 1891; The Banner-Stockman, October 1893; The Agitator, February 1899; The Clarendon Times, May 1906; The Donkey County Leader, March 12, 1929; The Clarendon Press, May 18, 1972; and The Clarendon Enterprise, March 14, 1996.

Member 2013



National Newspaper Association



Texas Press Association



West Texas Press Association



Panhandle Press Association



OUTPOST DELI
THIS WEEK'S SPECIAL

★

¿Qué Pasa?

Community Calendar

- August 16**
Broncos v Bovina • Scrimmage • 5 p.m. • Bovina
- August 16**
Owls v Lefors • Scrimmage • 5 p.m.
- August 22**
Broncos v White Deer • Scrimmage • 5 p.m. • Clarendon
- August 23**
Owls v Ft. Elliott/White Deer • Scrimmage • 6 p.m. • Hedley
- August 26**
Back to school
- August 30**
Broncos v Tulia • 7:30 p.m. • Tulia
- August 30**
Owls v Higgins • 7:30 p.m. • Higgins
- August 31**
Clarendon Cross Country • HS/JH • Borger

★

Menus

August 12 - 16

Donley County Senior Citizens
Mon: Spaghetti w/ meat sauce, spinach, whole wheat roll, salad, fruit bowl, iced tea/2% milk.
Tue: Breaded chicken tenders, baked potato, sour cream, peas & carrots, strawberries/whip cream, iced tea/2% milk.
Wed: BBQ brisket, ranch style beans, cornbread, carrot sticks, chocolate pudding, iced tea/2% milk.
Thur: Baked chicken & dumplings, tossed salad, whole wheat roll, margarine, peach Chantilly, iced tea/2% milk.
Fri: Cheeseburger, lettuce/tomato/pickle, potato wedges, melon medley, iced tea/2% milk.

Hedley Senior Citizens
Mon: Oven fried chicken, bow tie pasta, broccoli/raisin, fruit cocktail, iced tea/2% milk.
Tue: Catfish, onion rings, spinach, Cole slaw, peach cobbler, iced tea/2% milk.
Wed: Chicken fried steak, country gravy, stewed okra, seasoned corn, pumpkin square, iced tea/2% milk.
Thur: Chicken & dumplings, whole wheat roll, margarine, tossed salad, winter fruit cup, iced tea/2% milk.
Fri: Sloppy Joe, country potato salad, zucchini & tomatoes, creamy fruit squares, whole wheat bun, iced tea/2% milk.

Little Miss Cheer camp will be held

Little Miss Cheerleader will be held on Saturday, August 24th from 10:00 a.m. to 3:00 p.m. with a parent performance at 3:00 p.m. The camp will be the weekend before school starts. This is different from last year, due to homecoming being the second week of school! The girls will cheer in the pep rally on Friday, September 6th and at the game that night.

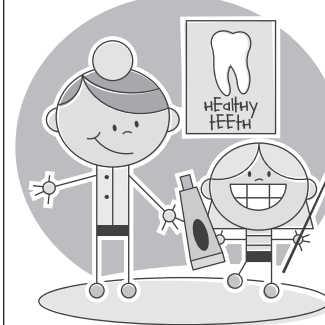
Country Club to host Two-Lady Partnership

By Sandy Anderberg

The Clarendon Country Club will host a Two-Lady Partnership on Saturday, August 17. The one day tournament will begin at 9:00 a.m. and entries are still being taken for the tournament at the Pro Shop.

Steve Jarnagin won low gross in the weekly men's game on Wednesday with an 83, and Gene Rogers won low net with a handicapped score of 75. Sandy Anderberg won low gross on Thursday with an 85, and Mary Ann Sawyer was low net with a 67. Saturday's low gross winner was Sherol Johnston with an 84. Gayle Rogers won first low net with a 69, and Gail Leathers was second low net with a 72.

The nine-hole scrambles are still being held each Friday night at 6:00 p.m. with entries being taken until 5:00 p.m. that evening.



Head back to the dentist before you head back to school!

Make a dental check up part of your child's back-to-school routine!

• Family Dentistry

• Orthodontics

• Implants

• Bleaching

Richard Sheppard, DDS

Located in the Community Services Building, Medical Center Campus in Clarendon

Now listed in the White Pages!

806-874-5628

Kids Us

Scammers prey on government grant confusion

Hey, gang, we had some fly-by-nights in town last week. They were wanting to repair your driveways. They claimed to be out of Amarillo, however neither the BBB nor I could find no trace of them or their business. Be very cautious when anyone comes to your door wanting to do repairs or painting. Call the Donley County Sheriff's Office to get them checked out. We have local people you can do your work.

"Congratulations! You're eligible for a free government grant. All you need to do is provide your checking account information so that the money can be wired directly into your account," the caller says. Not so fast. How the Scam Works: It starts like most phishing phone calls. You receive a phone call or voicemail informing you that you're the lucky recipient of a government grant. The calls generally come from a number with a 202 area code, suggesting that they originate in Washington, DC. On the other end, the caller claims to be from a legitimate sounding source, such as the "Federal Grant Association" (a non-existent organization) and wants your checking account information so that the money can be wired directly into your account.

This classic government grant scam has been around for years and has remained a threat because most people are not familiar with the grant system and procedure, and consequently are not likely to see through fraudulent inquiries.

How to Spot a Government Grant Scam: Don't give out your bank account information to anyone

you don't know. Always keep your bank account information confidential. Don't share it unless you are familiar with the company and know why the information is necessary.

Don't pay any money for a "free" government grant. If you have to pay money to claim a "free" government grant, it isn't really free. A real government agency won't ask you to pay a processing fee for a grant that you have already been awarded - or to pay for a list of grant-making institutions. The only official access point for all federal grant-making agencies is grants.gov.

Look-alikes aren't the real thing. Just because the caller says they're from the "Federal Grants Administration" doesn't mean that they are. There is no such government agency. And although it may look like they're calling from Washington, DC, they could be calling from anywhere in the world. Take control of the calls you receive. If you want to reduce the number of telemarketing calls you receive, place your telephone number on the National Do Not Call Registry. To register online, visit donotcall.gov. File a complaint with the FTC. If you think you may have been a victim of a government grant scam, file a complaint with the FTC online, or call toll-free, 1-877-FTC-HELP.

FBI "Ransomware" Scam Targets Mac Users, Too

Watch out, Mac users. A new version of a common computer virus is now targeting you. This malware poses as the FBI and tries to extort hundreds of dollars from victims. How the Scam Works: You are surf-

ing the Internet, and a window pops up. It appears to be from the FBI accusing you of violating US law and, as a result, locking your computer. The message says you need to pay a \$200 (or more) fine with a prepaid money card. Do so, and you will get the code to unlock your machine.

The warning looks real. It uses legal language, bears the FBI seal and has "fbi.gov" in the URL. When you try to close your web browser, it only causes more windows with warning messages to appear. Despite its official appearance, the pop up is a scam. Like other malware, it is installed on your computer when you open a malicious attachment, click on a link in an email or visit a scam website. It is later triggered by searching for certain terms. The "ransomware" virus preys on users' anxiety about viewing common, but illegal or unsavory, online content, such as pirated videos or pornography. The virus has been fooling PC users since spring 2012. But the newest version is targeting OS X Mac users. If you have received such a pop up, do not follow payment instructions. Instead, file a complaint with the FBI.

How to Deal with the Virus: As always, make sure your computer's operating system and browser are up to date with the latest security protections. And run a virus scan



bob's whittlin'

by bob utton

if you may have downloaded anything suspicious. Here's how you can unfreeze your computer if you encounter this virus:

Mac Users: Click on the Safari menu and choosing "reset Safari." Make sure all check boxes are selected or hold down the Shift key while relaunching Safari. This will prevent Safari from reopening windows and tabs from the previous session. Victims can also disable the reopening feature across OS X from the General pane of System Preferences.

PC users: Turn off your computer and start it again in "safe mode." Follow Window's instructions to do a "System Restore"

7 Reasons to be Cautious of an Advertised Nanny Job

Being the caretaker for someone else's child is a trusted position that is often rewarded with lucrative pay. Competition for these coveted jobs can be stiff, so when you come across an ad on Craigslist promising \$1000/week, you're sold. But before you sign away your time and babysitting expertise, be incredibly wary of potential scams. In particular is a profitable and popular scam known as the Nanny Scam. In the past few years, a number of nannies seeking work have fallen victim to this fraud.

eNannySource describes how the Nanny Scam works. The nanny scammer, posing as a parent, posts an ad seeking a nanny and offers high-pay and appealing working conditions. They hire the nanny without an interview or face-to-face meeting. The scammer creates an elaborate story about how they are moving in

from out of town and want to send an advanced payment in order to secure the nanny for the job. When the money order arrives, it is for more than promised and played off as a "mistake." The scammer requests the nanny to deposit the check, keep the amount that covers her salary, and then wire the excess amount. At this point, your money has been sent to the scammer and the bank has discovered that the check is fraudulent. The bank will then require you to payback all of the money you deposited, including the money you sent to the scammer. According to eNannySource, this can sometimes be up to \$5000.

So what are the signs that you may be getting scammed? eNannySource suggests that if one of more of the following is true, you probably are a victim of a Nanny Scam: A family wants to hire you without meeting you or even checking your background. Would you hire someone to care for your children whom you have not even met? The offer is too good to be true. Anyone who tells you that they will send you money to purchase items for them - toys, video games or a wheelchair. Someone says they are moving to your town, but they are currently out of the country. You are asked to accept any form of payment over the Internet. You are asked for banking information. You are asked to cash a check from someone you don't know. No legitimate employer would send you money up front. To read the full article visit, <http://www.enanny-source.com/find-nanny-job/nanny-scam.aspx>.

Peanut farming in a 'peg' shell

Oh, blessed rain, keep coming! A half inch here, a quarter inch there after our big rains, and this part of the Panhandle is looking good. As I drive around our rural roads, the playaponds have water, the pastures are green with wild flowers blooming. The cotton looks good, and so do peanuts. I was under the impression peanuts grew like potatoes, but that is so wrong.

One morning last week as Ole Jim and I sat on the deck drinking that first cup of coffee with the radio on, the Farm Report came on with a report on peanuts and "dropping the 1 p's." "What are you talking about?" I asked and the handy computer answered my question.

First, you need a good, well-drained soil clear of clods, rocks and

sticks and raw peanuts, you may buy them at the grocery store just be sure they are not salted, roasted, or boiled. Plant early in spring because they have a long growing season. They come up looking like clover then begin blooming with a yellow flower and that is when the magic begins. The stem with flower begins to grow tall and slender, bees pollinate the flower and form a seed, the stem (with flower and seed still attached) slowly bends and "sets the peg" or seed into the ground around the



wick picks

by peggy cocherham

Howardwick • 874-2886

plant. It takes about 10 days for the peg to stop burrowing in the ground and each seed can produce up to four peanuts. They continue to bloom and peg all season and indicate when to dig by foliage turning yellow. Now who thought of that process? It sounds like something from a science fiction movie but it happens and must be a God thing.

Our condolences to long time Howardwick City Secretary Dianna Knight on the loss of her brother, Phillip Gist. Phillip was raised in Pampa and graduated from Pampa High where he was a member of the championship basketball team in the late 1950s. He retired from the Navy and lived in Pensacola, Florida. God bless this family. Our thoughts and prayers are with you.

New business opens on highway in Hedley

Hedley has a new businesses. Benitez Semi Tire Service at 102 Hwy 287 E, does mostly truck tires and is located on the highway at the caution light. We are so excited to have them here. Come on by and get acquainted. We need new businesses like this in our area.

We had glorious rain! Thank you, God, for the rain. If anyone wants tickets on the Hedley Senior Citizens "Hunting Package," please call Kathy at 856-5302 or mail a check to Hedley Senior Citizens, PO Box 216, Hedley, Texas 79237.

Recipe: Taco Casserole: 1 lb

ground beef, 1 (1 1/4 ounce) package

taco seasoning, 1 (15 ounce) can

refried beans, 2 cups

monterey jack cheese, divided (or mixed

cheddar, jack etc.), 1 cup salsa, 2 green onions, chopped, 1 (2

1/3 ounce) can sliced black olives, 1 tomato, chopped, 2 cups corn

chips (coarsely crushed or chopped).



chatty kathy

by kathy spier

Hedley • 856-5302

Brown ground beef and drain. Add taco seasoning and cook according to package directions, adding proper amount of water. Put corn chips on bottom of 8x8" dish. Cook refried beans on stove until hot. Add 1 cup cheese and 1 cup salsa. Stir until combined. Pour beans over corn chips in dish. Add beef to top of beans. Sprinkle remaining cheese over top. Sprinkle green onions and black olives over cheese. Bake in a 375 degree oven until the cheese is sufficiently melted. Take out of oven and sprinkle chopped tomatoes on top. Wait 1-2 minutes and then serve.



Jim and Jeannie Formway of Clarendon will celebrate their 50th wedding anniversary on Saturday, August 17, 2013, with a reception at the Clarendon Senior Citizens from 3 to 5 p.m. The bride was the daughter of Gene and Lee Welch, and the groom was the son of Albert Cester Formway and Mertie Formway. Jim works at Collberson Stowers. They have one daughter, Kim Formway; and grand children. Please come celebrate their happy union with us.

Subscribe Today!

Drugs in the News

New Drug May Increase Survival in Multiple Myeloma

A recent, large, multicenter study showed that pomalidomide (Pomalyst) in combination with low-dose dexamethasone significantly improved the survival of persons with multiple myeloma who had their condition worsened after failing two prior therapies. Medications that are often used in the beginning of multiple myeloma treatment are bortezomib (Velcade) and lenalidomide (Revlimid). In this study, over four hundred people with progressed multiple myeloma were grouped to receive either pomalidomide and low-dose dexamethasone or high-dose dexamethasone alone. The results showed that the pomalidomide and low-dose dexamethasone group lived longer and had less spreading of the tumor than the high-dose dexamethasone group. Pomalidomide works by destroying cancer cells, strengthening the immune system's cells, and helps reduce tumor growth by breaking off the tumor's nutritional support. The FDA has certain requirements that must be fulfilled by a healthcare professional prior to use of this medication.

Rx

Mike's PHARMACY

Call 874-3554 or Toll Free 800-766-2089

Hwy 287 West • Clarendon, Texas

Rangers present cross at Goodnight

The Former Texas Rangers Association/Foundation held a cross ceremony at the Goodnight Cemetery on Saturday honoring Col. Charles Goodnight.

Goodnight was a Texas Ranger, and the cross, made by Kevin Johnson of Clarendon, is on permanent display at his gravesite in Goodnight.

Some of the honored guests included Ruth Robinson, who is a relative of Charles Goodnight; Benny Tahmahkera who is the great, great, great-grandson of Quanah Parker; and many former Texas Rangers from around the state.

The cross includes symbols to honor Goodnight as both a Texas Ranger and a Mason. Is it identical to another cross made by Johnson which was placed on the tomb of Stephen F. Austin earlier this year.



Those attending the dedication of the Goodnight Texas Ranger / Masonic Cross were Jim Gillespie, Captain Carl Weathers, Brantley Foster, Jamie Downs, Phil Ryann, Alvin Schmidt, Jack Morton, Senior Captain Lefty Block, Benny Tahmahkera, Dick Johnson, Marla Nauri, Captain James Wright, Joe Davis, Kevin Johnson, Captain Jerry Bryne, and Ralph Wadesworth.

COURTESY PHOTO / CHERYL JOHNSON

Regents approve request for WTAMU center for learning disabilities

The College of Education and Social Sciences at West Texas A&M University in Canyon is now home to the WTAMU Center for Learning Disabilities (CLD) following approval for its establishment by The Texas A&M University System Board of Regents at its regular meeting Aug. 8-9 in College Station.

The University established the WTAMU Community Partnership for Learning Disabilities (PLD) in 2011 to provide a resource for parents of children with learning disabilities. A website was created along with educational, research and community outreach initiatives, and WTAMU officials wanted to capitalize on the success of those initiatives with the creation of the West Texas A&M University Center for Learning Disabilities. The Center will be funded through external sources and housed at WTAMU's Amarillo

Center in Amarillo.

"The creation of the WTAMU Center for Learning Disabilities provides a means for WT to expand on a sustained basis its specialized offerings for the Panhandle community," Dr. J. Patrick O'Brien, University president, said. "Through increased services and research, it will provide a learning environment for our students, a resource for parents and an opportunity to educate the public. I expect the Center will make a significant impact in the lives of those with learning disabilities."

The CLD is a collaborative effort designed to promote evidence-based teaching and research to help those with learning disabilities find success. Parents will continue to discover a network of support through the CLD while educators and administrators can count on professional development designed to help in the

identification of students with learning disabilities along with a curriculum to ensure improved student learning.

Students in multiple disciplines at WTAMU will gain hands-on learning in a proposed state-of-the-art laboratory. The facility will serve as a classroom for undergraduate and graduate students learning to assess and teach children with disabilities. It also will provide students, teachers, educators and families opportunities to experience the latest in technology and adaptive equipment. Traditional assessment instruments and technology-based and assisted assessments will be used to focus on the early identification of exceptional learners.

Many of the services provided through the PLD—community outreach, student scholarships, research, grants and the Distinguished Lecture

Series in Learning Disabilities—will continue through the Center while others will be introduced to fulfill its mission. The Center will work with the WTAMU Department of Education to establish certificate programs focused on dyslexia for both undergraduate and graduate students along with plans to endow a chair in learning disabilities to provide leadership for the Center.

"What a gift WTAMU has given to the Texas Panhandle by providing support and programs to the families who have been affected by learning disabilities," Puff Niegros, chair of the CLD advisory council, said. "This effort has the potential to change lives."

For more information about the WTAMU Center for Learning Disabilities, visit the website at wtamu.edu/academics/learning-disabilities-about-us.aspx.

AgriLife Extension canning, freezing class

AMARILLO – Preserving the Harvest Food Preservation Class 2013 will be held Aug. 30 at the Texas A&M AgriLife Extension Service offices for Potter County, 3301 E. 10th Ave, in Amarillo.

The class will begin at 9 a.m. and cover the basics of water-bath canning, freezing and dehydrating foods and home food preservation safety, said Amy Wagner, AgriLife Extension family and consumer sciences agent for Potter County.

The workshop cost is \$35 and each participant will take home a training notebook, the University of Georgia's "So Easy to Preserve" publication, snacks and products preserved during the class.

"We will be canning salsa, jams and jellies and putting up beans," Wagner said. The class will be limited to 15 participants. Those planning to attend should RSVP by Aug. 22 by contacting Wagner at 806-373-0713 or aewagner@ag.tamu.edu .

Subscribe Today

Donley County Subscription: \$29/yr.

Out of County Subscription: \$39/yr.

Out of State Subscription: \$44/yr.

Enterprise-D Subscription: \$14.95/yr.

Call 874-2259 for more information

TWICE THE BARGAINS City-Wide Garage Sales

Panhandle & White Deer, Texas

Saturday, Aug. 17th

All kinds of Sales throughout both towns

Maps & listings available Saturday morning at Thriftway and Family Dollar in Panhandle and Clint & Sons, Allsups and the Post Office in White Deer

For more information call Panhandle Chamber of Commerce at 806.537.4325

Morrow Drilling & Service

Hwy. 287 West, Clarendon

Water Well Specialist • Turnkey Systems

Solar Windmill • Electric Irrigation

30 Years Experience

John E. Morrow (806)874-2704 • (806)662-3943



Joey & Brenda Lee

Lee's Insurance

PO Box 189 • Clarendon, Texas 79226

806.874.2130

HOME • AUTO • LIFE • COMMERCIAL

Mr. Fix It

Kyle Hill

Minor repairs, odd jobs, and more.

672-8908

Buy ♦ Sell ♦ Trade ♦ Give Away

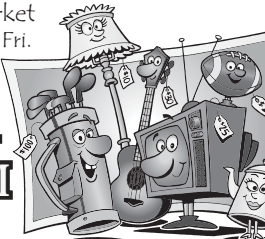
Joe's Flea Market

Mon. ♦ Wed. ♦ Fri.

at 9 a.m.

KLSR

105.3 FM



DEADLINES

News & Photos Monday @ noon
Ads & Classifieds Monday @ 5 p.m.

NOTICE OF PUBLIC MEETING TO DISCUSS BUDGET

The Clarendon Consolidated Independent School District

(name of school district)

will hold a public meeting at 7:00 P.M. on August 27, 2013

(time, date, year)

in the Clarendon CISD Administration and Technology Building located at 416 South Allen Street,

(name of room, building, physical location)

Clarendon, Texas 79226.

(city, state)

The purpose of this meeting is to discuss the school district's budget that will be adopted. Public participation in the discussion is invited.

Comparison of Proposed Budget with Last Year's Budget

The applicable percentage increase or decrease (or difference) in the amount budgeted in the preceding fiscal year and the amount budgeted for the fiscal year that begins during the current tax year is indicated for each of the following expenditure categories:

| | | | | | |
|----------------------------|---|------------|----|---|--------------|
| Maintenance and operations | 0 | % increase | or | 5 | % (decrease) |
| Debt service | 0 | % increase | or | 0 | % (decrease) |
| Total expenditures | 0 | % increase | or | 5 | % (decrease) |

Clarendon Church of Christ
OCTOBER 19TH, MARK IT DOWN ON
YOUR CALENDAR!

Why? On October 19th from 9 a.m. until 3:00 p.m., a seminar will be conducted on our college campus at the auditorium. Dr. Dave Miller will be conducting the seminar called: "THE SILENCING OF GOD (The Dismantling of America's Christian Heritage).

The seminar is not a religious event per se. There will be no "come to Jesus" moment and there will be no collections taken. His seminar is to help combat the "rewriting" of history by liberals and progressives over the last 50 years. For years, Christianity and the fact that our country was founded upon Biblical values have been systematically attacked. A new narrative has been formed that basically says that our country is to be neutral to religion, that our founding fathers were atheists or neutral to God. Their "new" history makes the constitution not understandable because our Founding Fathers weren't "clear" and left a lot of "fill in the blanks" concerning gay rights, abortion, etc.

Come see for yourselves as Dr. Miller will show you in the Founding Fathers' own writings what was meant when the Declaration and the Constitution were written. For example, did you know that in the 18th century, homosexuality between men was called sodomy and was punished by death in 3 colonies? Thomas Jefferson serving as the governor of Virginia, once proposed a law for punishment of sodomy to be dismemberment! The punishment ended up being prison with hard labor. Now, do you really think the Founders had no opinion on homosexuality? The media will not tell you these things nor will the far left groups whom attack those of us who dare to speak out.

Anyone who loves Christ and enjoys studying the history of our country would enjoy themselves and be educated during this program. Bring your kids and grandkids as they are the ones who have been indoctrinated with incorrect history books. Several generations have been lied to about the constitution and the men who wrote it. Truth should have no enemies! Let us all educate ourselves and try to stem this "avalanche" of misinformation. If you can stay for the whole program, you will be fed lunch. It is divided into several segments so you can come and go as you please.

I plead with you as a fellow American who believes that our country was founded upon Biblical principles, to come and bring as many friends as you can. I've heard the seminar once before and it is top notch. You will literally walk away with your "eyes opened." I hope to see you there. God bless you and our country.

CLARENDON CHURCH OF CHRIST
PO Box 861 / Clarendon, TX 79226
Minister: Chris Moore / 874-1450

If you have any Bible questions, please write or call.

Green family holds annual August Christmas reunion

The family members of Horace A. and Naomi Morris Green got together over the weekend of August 11, 12, and 13 for a reunion and to commemorate their annual Christmas in August. Forty-six family members were present to help celebrate.

Family members began arriving at the Northwest Inn in Woodward, Okla., on Friday evening where they enjoyed the atrium with an indoor pool, shuffle board, ping pong and billiards as well as visiting. On Saturday some people toured the Alabaster Caverns at Freedom, Okla., while others hung out at the atrium and Terrace Room of the motel.

Besides swimming, the children played with toys and games

and dressed-up in dress-up attire for pictures. In the evening folks went to the city park in Woodward for a catered barbeque meal, access to the playground, activities at the Crystal Beach Water Park and then train rides around the recreational area. After Sunday morning breakfast relatives adjourned to the Fargo, Okla., country home of Ellen and Kevin Morehart where a lunch of cold cuts, fruits and vegetables was served before leaving for home.

Children present were Robin M. Green of Lubbock, Patricia and Willis Friesen of Frisco, Beth Stepp of Dallas, Ellen and Kevin Morehart of Fargo, Okla. and Katherine Williams of Clarendon.

Grandchildren and their families in attendance were: Robin

and Lisa Lynn Green of Aurora, Colo.; Elena and Joel Cruce of Garland; David Green, Jaythan and Madison of Clarendon; Clint and Emily Green of Amarillo; Lindsay and Brent Wilhelm, Pierce and Kennedy of Happy; Lori Parscal, Kristen, Hali, Kaylyn and Gavin of Amarillo, Lauren Rodriguez and Travis Mohr of Aubrey; Charolette and Troy Sandell, Braden and Brian Watts of Dallas; Tiffany and Jerry Newell, Jacoby, Kaitlin and Dillon of Woodward, Okla.; Stephanie Adcock and Tyson Broadfoot, Cody, Aviana, Sam and Ella Marie of Broken Arrow, Okla.; and Micah Morehart and friend Tyler Foale of Fargo, Okla. Also there were Jerome and Bobette Doerrie of Booker, Texas.



Hunters return

Three Donley County residents recently returned from a safari in South Africa with All American Outfitters hunting with Ingwe Safaris. Shown here at the hunting lodge near Douglas, South Africa, in the Northern Cape Province are Roseann Mayer, Debbie Kennedy and Ken Mayer.

COURTESY PHOTO BY KIRK DWIGHT

Clarendon CISD fills two teaching jobs

The Clarendon Consolidated Independent School District Board of Trustees met August 8, 2013, in regular session and filled two teachers' positions among considering other agenda items.

Following a 22-minute closed session, the board approved offering employment contracts to Amber Williams, first grade, and Karissa Huffman, high school Spanish/math.

Trustees also approved West Texas Gas as the school's provider for transportation fuel for 2013-2014, and heard several administrative reports. The superintendent presented a report on the 2013-2014 Budget Development. Trustees voted to set the Budget Hearing/Adoption meeting on Tuesday, August 27, 2013, at 7:00 p.m. in the Clarendon CISD Video Conference Room.

Be Loyal. Buy Local. Support the merchants who support your community.

AMARILLO'S FIRST MILLION DOLLAR DUCK RACE August 18 at Wonderland Park Adopt your duck at MillionDollarDuckRace.com

NOTICE OF PUBLIC MEETING TO DISCUSS BUDGET AND PROPOSED TAX RATE The _____ Hedley ISD _____ will hold a public meeting at _____ 6:30PM, August 29, 2013 _____ in _____ Hedley ISD Board Room, 301 Jones _____ Hedley, TX _____

Comparison of Proposed Budget with Last Year's Budget The applicable percentage increase or decrease (or difference) in the amount budgeted in the preceding fiscal year and the amount budgeted for the fiscal year that begins during the current tax year is indicated for each of the following expenditure categories:

Total Appraised Value and Total Taxable Value (as calculated under Section 26.04, Tax Code) Preceding Tax Year Current Tax Year Total appraised value* of all property \$ 164,221,409 \$ 170,414,025

Bonded Indebtedness Total amount of outstanding and unpaid bonded indebtedness* \$ 335,000 * Outstanding principal.

Comparison of Proposed Rates with Last Year's Rates Maintenance & Operations Interest & Sinking Fund* Total Local Revenue Per Student State Revenue Per Student Last Year's Rate \$ 1.00000 \$ 0.06700 * \$ 1.06700 \$ 4.334 \$ 9.184

Comparison of Proposed Levy with Last Year's Levy on Average Residence Last Year This Year Average Market Value of Residences \$ 21,422 \$ 18,440 Average Taxable Value of Residences \$ 6,422 \$ 3,440

Notice of Rollback Rate: The highest tax rate the district can adopt before requiring voter approval at an election is 1.10982. This election will be automatically held if the district adopts a rate in excess of the rollback rate of 1.10982.

Fund Balances The following estimated balances will remain at the end of the current fiscal year and are not encumbered with or by a corresponding debt obligation, less estimated funds necessary for operating the district before receipt of the first state aid payment:

2013 Property Tax Rates in City of Clarendon This notice concerns 2013 property tax rates for City of Clarendon. It presents information about three tax rates. Last year's tax rate is the actual rate the taxing unit used to determine property taxes last year. This year's effective tax rate would impose the same total taxes as last year if you compare properties taxed in both years. This year's rollback tax rate is the highest tax rate the taxing unit can set before taxpayers can start tax rollback procedures. In each case these rates are found by dividing the total amount of taxes by the tax base (the total value of taxable property) with adjustments as required by state law. The rates are given per \$100 of property value.



FALL 2013 PROPOSED SCHEDULE OF CLASSES

CLARENDON • FALL 2013

| COURSE ID | COURSE TITLE | DAYS | START | END | LOCATION | INSTRUCTOR |
|--|--|-------|---------|---------|-----------|-----------------------|
| ACCOUNTING | | | | | | |
| ACCT 2301.101 | PRINCIPLES OF ACCT I FINANCIAL | TR | 9:30AM | 10:50AM | ADMIN-104 | Taylor, Robert H |
| AGRICULTURE | | | | | | |
| AGRI 1131.101 | THE AGRICULTURAL INDUSTRY | W | 8:00AM | 8:55AM | CRSN-108 | Trischel, Johnny L |
| AGRI 1319.101 | INTRODUCTORY ANIMAL SCIENCE LAB | T | 3:00PM | 4:55PM | CRSN-117 | Trischel, Johnny L |
| AGRI 1329.101 | MARKETING OF AGRICULTURAL PRODUCTS | MF | 9:00AM | 9:55AM | CRSN-117 | Trischel, Johnny L |
| AGRI 1329.101 | PRINCIPLES OF FOOD SCIENCE | TR | 11:00AM | 12:15PM | CRSN-118 | Fuller, Courtney |
| AGRI 1415.101 | PRINCIPLES OF HORTICULTURE LAB | TR | 8:00AM | 9:20AM | CRSN-117 | Fuller, Courtney |
| AGRI 1415.101 | PRINCIPLES OF HORTICULTURE | T | 1:00PM | 3:20PM | CRSN-117 | Fuller, Courtney |
| AGRI 2121.101 | LIVESTOCK EVALUATION-FRESHMAN | TR | 9:30AM | 10:55AM | CRSN-109 | Trischel, Johnny L |
| AGRI 2121.102 | LIVESTOCK EVALUATION-SOPHOMORE | M | 1:00PM | 5:00PM | CRSN-109 | Trischel, Johnny L |
| AGRI 2121.103 | LIVESTOCK EVALUATION-MEATS | W | 1:00PM | 5:00PM | CRSN-109 | Trischel, Johnny L |
| AGRI 2317.101 | INTRODUCTION TO AGRICULTURE ECONOMICS | MF | 10:00AM | 10:55AM | CRSN-117 | Taylor, Robert H |
| ART | | | | | | |
| ARTS 1301.901 | ART APPRECIATION | TR | 12:25PM | 1:50PM | ADMIN-202 | Siles, Melinda |
| ARTS 1303.101 | ART HISTORY I | TR | 11:00PM | 12:15PM | ADMIN-107 | Siles, Melinda |
| BIOLOGY | | | | | | |
| BIOL 1406.101 | BIOLOGY FOR SCIENCE MAJORS I LAB | R | 1:00PM | 3:20PM | ADMIN-209 | Estlack, Russell A |
| BIOL 1406.911 | BIOLOGY FOR SCIENCE MAJORS I | T | 5:00PM | 7:50PM | ADMIN-202 | Estlack, Russell A |
| BIOL 1411.101 | GENERAL BOTANY LAB | M | 1:00PM | 3:20PM | ADMIN-207 | Estlack, Scarlet M |
| BIOL 1411.102 | GENERAL BOTANY LAB | T | 1:00PM | 3:20PM | ADMIN-207 | Estlack, Scarlet M |
| BIOL 1411.101 | GENERAL BOTANY | TR | 8:00AM | 9:20AM | ADMIN-207 | Estlack, Scarlet M |
| BIOL 1411.102 | GENERAL BOTANY | TR | 11:00AM | 12:20PM | ADMIN-207 | Estlack, Scarlet M |
| BIOL 1413.101 | GENERAL ZOOLOGY LAB | R | 1:00PM | 3:20PM | ADMIN-207 | Estlack, Scarlet M |
| BIOL 1413.101 | GENERAL ZOOLOGY | TR | 9:30AM | 10:50AM | ADMIN-207 | Estlack, Scarlet M |
| BIOL 2401.101 | ANATOMY AND PHYSIOLOGY I LAB | W | 1:00PM | 3:20PM | ADMIN-207 | Estlack, Scarlet M |
| BIOL 2401.101 | ANATOMY AND PHYSIOLOGY I | MF | 10:00AM | 10:55AM | ADMIN-207 | Estlack, Scarlet M |
| BIOL 2401.102 | ANATOMY AND PHYSIOLOGY II LAB | M | 1:00PM | 3:20PM | ADMIN-207 | Estlack, Scarlet M |
| BIOL 2401.102 | ANATOMY AND PHYSIOLOGY II | MF | 11:00AM | 11:55AM | ADMIN-207 | Estlack, Scarlet M |
| BUSINESS COMPUTER INFORMATION SYSTEMS | | | | | | |
| BCIS 1305.101 | BUSINESS COMPUTER APPLICATIONS | T | 12:15PM | 1:45PM | ADMIN-203 | Denney, Pamela M |
| CHEMISTRY | | | | | | |
| CHEM 1111.101 | GEN CHEMISTRY LAB I | M | 1:00PM | 3:20PM | ADMIN-206 | Killingworth, Russell |
| CHEM 1111.102 | GEN CHEMISTRY LAB I | W | 1:00PM | 3:20PM | ADMIN-206 | Killingworth, Russell |
| CHEM 1111.101 | GEN CHEMISTRY LAB I | M | 6:00PM | 7:50PM | ADMIN-206 | Killingworth, Russell |
| CHEM 1311.101 | GENERAL CHEMISTRY I | MF | 10:00AM | 10:55AM | ADMIN-208 | Killingworth, Russell |
| CHEM 1311.102 | GENERAL CHEMISTRY I | TR | 9:30AM | 10:50AM | ADMIN-208 | Killingworth, Russell |
| CHEM 2223.101 | ORGANIC CHEMISTRY LAB I | T | 1:00PM | 4:50PM | ADMIN-206 | Killingworth, Russell |
| CHEM 2223.101 | ORGANIC CHEMISTRY I | TR | 11:00AM | 12:20PM | ADMIN-208 | Killingworth, Russell |
| CRIMINAL JUSTICE | | | | | | |
| CRJ 1301.901 | INTRODUCTION TO CRIMINAL JUSTICE | TR | 8:00AM | 9:20AM | ADMIN-202 | Jeffrey, Selena K |
| CRJ 1310.901 | FUNDAMENTALS OF CRIMINAL LAW | TR | 11:00AM | 12:20PM | ADMIN-202 | Jeffrey, Selena K |
| CRJ 2326.901 | POLICE SYSTEMS AND PRACTICES | MF | 10:00AM | 10:55AM | ADMIN-202 | Jeffrey, Selena K |
| DEVELOPMENTAL STUDIES | | | | | | |
| DEVS 0200.110 | DEVELOPMENTAL STUDIES LAB | MF | 5:00PM | 5:55PM | ADMIN-201 | Gordon, James E |
| DEVS 0200.115 | DEVELOPMENTAL STUDIES LAB-MATH EMPHASIS | W | 1:00PM | 2:45PM | ADMIN-203 | Rowland, Linda M |
| DEVS 0200.116 | DEVELOPMENTAL STUDIES LAB-MATH EMPHASIS | MF | 11:00AM | 12:00PM | ADMIN-203 | Rodriguez, Alejandra |
| DEVS 0200.117 | DEVELOPMENTAL STUDIES LAB-MATH EMPHASIS | M | 1:00PM | 3:00PM | ADMIN-203 | Sain, Jeremy |
| ILAB 0200.101 | IRAW LAB | MF | 11:00AM | 11:55AM | ADMIN-201 | Hannon, Sharon K |
| ILAB 0200.102 | IRAW LAB | TR | 11:00AM | 11:55AM | ADMIN-201 | Hannon, Sharon K |
| ILAB 0200.103 | IRAW LAB | W | 1:00PM | 1:55PM | ADMIN-201 | Hannon, Sharon K |
| IRAW 0302.101 | INTEGRATED READING AND WRITING DEVELOPMENTAL LEVEL 2 | TR | 8:00AM | 9:25AM | ADMIN-107 | Hannon, Sharon K |
| IRAW 0302.102 | INTEGRATED READING AND WRITING DEVELOPMENTAL LEVEL 3 | MF | 10:00AM | 10:55AM | ADMIN-107 | Hannon, Sharon K |
| IRAW 0303.101 | INTEGRATED READING AND WRITING DEVELOPMENTAL LEVEL 3 | MF | 9:00AM | 9:55AM | ADMIN-107 | Hannon, Sharon K |
| IRAW 0303.102 | INTEGRATED READING AND WRITING DEVELOPMENTAL LEVEL 3 | TR | 9:30AM | 10:50AM | ADMIN-107 | Hannon, Sharon K |
| MATH 0302.101 | DEVELOPMENTAL MATHEMATICS II-LINKED TO MATH 0303 | TR | 9:00AM | 8:55AM | ADMIN-101 | Rowland, Linda M |
| MATH 0302.102 | DEVELOPMENTAL MATHEMATICS II-LINKED TO MATH 0303 | MF | 9:00AM | 9:55AM | ADMIN-101 | Sain, Jeremy |
| MATH 0303.101 | DEVELOPMENTAL MATHEMATICS III | MF | 9:00AM | 9:55AM | ADMIN-101 | Sain, Jeremy |
| MATH 0303.102 | DEVELOPMENTAL MATHEMATICS III-LINKED TO MATH 0302 | MF | 11:00AM | 11:55AM | ADMIN-101 | Rowland, Linda M |
| NCBB 0101.101 | NON-COURSE BASED BUBBLE STUDENTS (IRAW) | F | 11:00AM | 11:55AM | ADMIN-101 | HANNON, S |
| NCBB 0101.102 | NON-COURSE BASED BUBBLE STUDENTS (MATH) | M | 1:00PM | 2:45PM | ADMIN-203 | HANNON, S |
| NCBB 0101.103 | NON-COURSE BASED DEVELOPMENTAL ENGLISH | MF | 8:00AM | 8:55AM | ADMIN-201 | HANNON, S |
| NCBB 0301.102 | NON-COURSE BASED DEVELOPMENTAL ENGLISH | TR | 1:00PM | 1:55PM | ADMIN-201 | HANNON, S |
| NCBB 0301.101 | NON-COURSE BASED DEVELOPMENTAL MATH | W | 1:00PM | 2:45PM | ADMIN-201 | Rowland, Linda M |
| NCBB 0301.101 | NON-COURSE BASED DEVELOPMENTAL MATH | MF | 8:00AM | 8:55AM | ADMIN-201 | HANNON, S |
| NCBB 0301.102 | NON-COURSE BASED DEVELOPMENTAL READING | TR | 1:00PM | 1:55PM | ADMIN-201 | HANNON, S |
| DRAMA | | | | | | |
| DRAM 1120.101 | THEATER PRACTICE I | N/A | N/A | N/A | HSEA-100 | Schnauder, Leslie K |
| DRAM 1310.101 | INTRODUCTION TO THE THEATER | MF | 11:00AM | 11:55AM | HSEA-100 | Schnauder, Leslie K |
| DRAM 1310.102 | INTRODUCTION TO THE THEATER | MF | 10:00AM | 10:55AM | HSEA-100 | Schnauder, Leslie K |
| DRAM 1330.101 | STAGE CRAFT I | TR | 1:30PM | 2:50PM | HSEA-100 | Schnauder, Leslie K |
| DRAM 1341.101 | MAKE UP | TR | 1:30PM | 2:50PM | HSEA-100 | Schnauder, Leslie K |
| DRAM 1342.101 | INTRODUCTION TO COSTUME | MF | 2:30PM | 3:50PM | HSEA-100 | Schnauder, Leslie K |
| DRAM 1351.101 | ACTING I | MF | 2:30PM | 3:50PM | HSEA-100 | Schnauder, Leslie K |
| DRAM 1352.101 | ACTING II | N/A | N/A | N/A | HSEA-100 | Schnauder, Leslie K |
| DRAM 2120.111 | THEATER PRACTICUM III | N/A | N/A | N/A | HSEA-100 | Schnauder, Leslie K |
| DRAM 2331.101 | STAGE CRAFT II | TR | 1:30PM | 2:50PM | HSEA-100 | Schnauder, Leslie K |
| DRAM 2351.101 | ACTING III | MF | 2:30PM | 3:50PM | HSEA-100 | Schnauder, Leslie K |
| DRAM 2361.101 | HISTORY OF THEATER I | TR | 11:00AM | 12:20PM | HSEA-100 | Schnauder, Leslie K |
| ECONOMICS | | | | | | |
| ECON 2301.101 | PRINCIPLES OF MACROECONOMICS | TR | 8:00AM | 9:20AM | ADMIN-106 | Taylor, Robert H |
| ENGLISH | | | | | | |
| ENGL 1301.101 | COMPOSITION I | MF | 9:00AM | 9:55AM | ADMIN-106 | McCoy, Melissa L |
| ENGL 1301.102 | COMPOSITION I | MF | 11:00AM | 11:55AM | ADMIN-106 | McCoy, Melissa L |
| ENGL 1301.103 | COMPOSITION I | TR | 9:30AM | 10:50AM | ADMIN-106 | McCoy, Melissa L |
| ENGL 1301.105 | COMPOSITION I | TR | 11:00AM | 12:20PM | ADMIN-106 | McCoy, Melissa L |
| ENGL 1302.101 | COMPOSITION II | TR | 8:00AM | 9:15AM | ADMIN-104 | Baxter, Rosemary H |
| ENGL 2332.101 | WORLD LITERATURE I | TR | 11:00AM | 12:20PM | ADMIN-104 | Baxter, Rosemary H |
| ENGL 2333.101 | WORLD LITERATURE II | MF | 10:00AM | 10:55AM | ADMIN-106 | McCoy, Melissa L |
| ENGLISH AS A SECOND LANGUAGE | | | | | | |
| ESOL 0301.111 | ESOL READING AND VOCABULARY I LAB | MF | 8:25AM | 8:50AM | LBRY-102 | Gordon, James E |
| ESOL 0301.111 | ESOL READING AND VOCABULARY I | MF | 7:00AM | 8:20AM | ADMIN-203 | Gordon, James E |
| ESOL 0303.111 | ESOL WRITING & GRAMMAR I LAB | TR | 7:00AM | 8:20AM | ADMIN-203 | Gordon, James E |
| ESOL 0303.111 | ESOL WRITING & GRAMMAR I | TR | 7:00AM | 8:20AM | ADMIN-203 | Gordon, James E |
| GOVERNMENT | | | | | | |
| GOVT 2305.101 | US FEDERAL GOVERNMENT | MF | 9:00AM | 9:55AM | ADMIN-103 | Murphy, John Patrick |
| GOVT 2305.102 | US FEDERAL GOVERNMENT | TR | 9:30AM | 10:50AM | ADMIN-105 | Murphy, John Patrick |
| GOVT 2305.103 | US FEDERAL GOVERNMENT | MF | 10:00AM | 10:55AM | ADMIN-105 | Murphy, John Patrick |
| GOVT 2306.101 | TEXAS GOVERNMENT | TR | 8:00AM | 9:20AM | ADMIN-105 | Ballodano, Bruno |
| GOVT 2306.901 | TEXAS GOVERNMENT | MF | 11:00AM | 11:55AM | ADMIN-202 | Jeffrey, Selena K |
| HISTORY | | | | | | |
| HIST 1301.101 | UNITED STATES HISTORY I | MF | 9:00AM | 9:55AM | ADMIN-102 | Fuller, Brian A |
| HIST 1301.102 | UNITED STATES HISTORY I | MF | 11:00AM | 11:55AM | ADMIN-102 | Fuller, Brian A |
| HIST 1301.103 | UNITED STATES HISTORY I | TR | 8:00AM | 9:20AM | ADMIN-102 | Fuller, Brian A |
| HIST 1302.101 | UNITED STATES HISTORY II | TR | 9:30AM | 10:50AM | ADMIN-102 | Fuller, Brian A |
| HIST 1302.102 | UNITED STATES HISTORY II | TR | 9:30AM | 10:50AM | ADMIN-102 | Fuller, Brian A |
| HIST 2311.111 | WESTERN CIVILIZATION I | R | 6:00PM | 8:20PM | ADMIN-102 | Fuller, Brian A |
| MEDICAL TERMINOLOGY | | | | | | |
| HITT 1305.901 | MEDICAL TERMINOLOGY | M | 1:00PM | 3:20PM | ADMIN-202 | Estlack, Russell A |
| MATHEMATICS | | | | | | |
| MATH 1314.101 | COLLEGE ALGEBRA-LINKED TO MATH 0303 | TR | 9:30AM | 10:45AM | ADMIN-101 | Sain, Jeremy |
| MATH 1314.102 | COLLEGE ALGEBRA | TR | 11:00AM | 12:20PM | ADMIN-101 | Sain, Jeremy |
| MATH 1314.103 | COLLEGE ALGEBRA | MF | 8:00AM | 8:55AM | ADMIN-202 | Rowland, Linda M |
| MATH 1314.105 | COLLEGE ALGEBRA | M | 1:00PM | 3:50PM | ADMIN-101 | Rowland, Linda M |
| MATH 1324.101 | MATHEMATICS FOR BUSINESS & SOC I | MF | 10:00AM | 10:55AM | ADMIN-203 | Rowland, Linda M |
| MATH 1342.901 | ELEMENTARY STATISTICAL METHODS | MF | 5:30PM | 6:50PM | ADMIN-101 | Taylor, Robert H |
| MATH 2413.101 | CALCULUS I LAB | F | 1:00PM | 3:20PM | ADMIN-103 | Rowland, Linda M |
| MATH 2413.101 | CALCULUS I | TR | 11:00AM | 12:20PM | ADMIN-103 | Rowland, Linda M |
| MATH 2418.101 | LINEAR ALGEBRA LAB | T | 1:00PM | 3:20PM | ADMIN-101 | Sain, Jeremy |
| MATH 2418.101 | LINEAR ALGEBRA | MF | 8:00AM | 8:55AM | ADMIN-101 | Sain, Jeremy |
| PHYSICAL EDUCATION | | | | | | |
| FIT 1191.111 | RODEO PE MEN | R | 6:00PM | 9:30PM | LEC-100 | Heck, Cody |
| FIT 1191.112 | RODEO PE WOMEN | T | 6:00PM | 9:30PM | LEC-100 | Heck, Cody |
| PHED 1100.101 | FRESHMAN MEN'S VARSITY GOLF I | MTWRF | 2:00PM | 6:00PM | GYM-100 | Green, John |
| PHED 1105.101 | WEIGHT LIFTING | MF | 8:00AM | 8:55AM | FIT-1 | Reyna, Hollie E |
| PHED 1105.102 | WEIGHT LIFTING | MF | 9:00AM | 9:55AM | FIT-1 | Reyna, Hollie E |
| PHED 1105.103 | WEIGHT LIFTING | TR | 8:00AM | 9:20AM | FIT-1 | Reyna, Hollie E |
| PHED 1105.104 | WEIGHT LIFTING | TR | 9:30AM | 10:50AM | FIT-1 | Reyna, Hollie E |
| PHED 1105.111 | WEIGHT LIFTING | R | 6:00PM | 9:20PM | FIT-1 | Reyna, Hollie E |
| PHED 1114.111 | FRESHMAN CONCEPTS OF CHEERLEADING I | MTWR | 6:30PM | 8:00PM | FIT-1 | Layton, Kim |
| PHED 1115.101 | PHYSICAL FITNESS | MF | 8:00AM | 8:55AM | FIT-1 | Reyna, Hollie E |
| PHED 1115.102 | PHYSICAL FITNESS | MF | 9:00AM | 9:55AM | FIT-1 | Reyna, Hollie E |
| PHED 1115.103 | PHYSICAL FITNESS | TR | 8:00AM | 9:20AM | FIT-1 | Reyna, Hollie E |

CLARENDON • FALL 2013

| COURSE ID | COURSE TITLE | DAYS | START | END | LOCATION | INSTRUCTOR |
|---------------------------------------|---|----------|-----------------------|----------|-----------|-----------------------|
| PHYSICAL EDUCATION | | | | | | |
| PHED 1115.104 | PHYSICAL FITNESS | TR | 9:30AM | 10:50AM | FIT-1 | Reyna, Hollie E |
| PHED 1115.101 | PHYSICAL FITNESS | R | 7:00PM | 9:50PM | FIT-1 | McIntosh, Devin |
| PHED 1116.101 | FRESHMAN BASKETBALL-WOMEN (VARSITY) I | MTWRF | 1:00PM | 2:50PM | GYM-100 | Vandon Boogaard, Brad |
| PHED 1117.101 | FRESHMAN BASKETBALL-MEN (VARSITY) I | MTWRF | 3:00PM | 4:50PM | GYM-100 | Starnes, Anthony G |
| PHED 1118.101 | FRESHMAN BASEBALL-MEN (VARSITY) I | MTWRF | 1:00PM | 4:50PM | BASE-1 | McIntosh, Devin |
| PHED 1119.101 | FRESHMAN VOLLEYBALL-WOMEN (VARSITY) I | MTWRF | 6:00PM | 8:40PM | GYM-100 | Reyna, Hollie E |
| PHED 1122.111 | FRESHMAN RANCH HORSE TEAM I | MW | 6:00PM | 9:00PM | LEC-100 | Franks, Bret |
| PHED 1123.101 | FRESHMAN SOFTBALL WOMEN VARSITY I | MTWRF | 1:00PM | 3:50PM | SBLD-1 | Hawkins, Raquel R |
| PHED 1125.111 | FRESHMAN RODEO - VARSITY I | MWF | 4:00PM | 6:00PM | LEC-100 | Heck, Cody |
| PHED 1126.101 | FRESHMAN CROSS COUNTRY WOMEN'S VARSITY I | MTWRF | 7:00AM | 8:30AM | GYM-100 | Laggett, Zack |
| PHED 1127.101 | FRESHMAN CROSS COUNTRY MEN'S VARSITY I | MTWRF | 7:00AM | 8:30AM | GYM-100 | Laggett, Zack |
| PHED 1161.111 | FRESHMAN RODEO - TIMED EVENTS FOR MEN I | R | 6:00PM | 9:30PM | LEC-100 | Heck, Cody |
| PHED 1162.111 | SOPHOMORE RODEO - TIMED EVENTS FOR MEN I | R | 6:00PM | 9:30PM | LEC-100 | Heck, Cody |
| PHED 1171.111 | RODEO - TIMED EVENTS FOR WOMEN | T | 6:00PM | 9:30PM | LEC-100 | Heck, Cody |
| PHED 1301.101 | INTRO TO PHYSICAL FITNESS & SPORT | TR | 8:00AM | 9:20AM | ADMIN-103 | McIntosh, Devin |
| PHED 1301.102 | INTRO TO PHYSICAL FITNESS & SPORT | MWF | 11:00AM | 11:55AM | ADMIN-202 | Hawkins, Raquel R |
| PHED 1306.101 | FIRST AID | TR | 8:00AM | 11:55AM | GYM-100 | Hawkins, Raquel R |
| PHED 1308.101 | SPORTS OFFICIATING I LAB | M | 11:00AM | 11:55AM | ADMIN-100 | Starnes, Anthony G |
| PHED 1308.101 | SPORTS OFFICIATING I | MWF | 10:00AM | 10:55AM | GYM-100 | Starnes, Anthony G |
| PHED 1321.101 | COACHING/SPORTS/ATHLETICS I LAB | T | 9:30AM | 10:25AM | GYM-100 | Starnes, Anthony G |
| PHED 1321.101 | COACHING/SPORTS/ATHLETICS I | TR | 8:00AM | 9:20AM | GYM-100 | Starnes, Anthony G |
| PHED 2100.101 | SOPHOMORE MENS GOLF-VARSITY | MTWRF | 2:00PM | 6:00PM | GYM-100 | Green, John |
| PHED 2114.101 | SOPHOMORE CONCEPTS OF CHEERLEADING I | MTWR | 6:30PM | 8:00PM | FIT-1 | Layton, Karl |
| PHED 2116.101 | SOPHOMORE BASKETBALL-WOMEN'S (VARSITY) I | MTWRF | 1:00PM | 2:50PM | GYM-100 | Vandon Boogaard, Brad |
| PHED 2117.101 | SOPHOMORE BASKETBALL-MEN'S (VARSITY) I | MTWRF | 3:00PM | 4:50PM | GYM-100 | Starnes, Anthony G |
| PHED 2118.101 | SOPHOMORE MEN'S BASEBALL (VARSITY) I | MTWRF | 1:00PM | 4:50PM | BASE-1 | McIntosh, Devin |
| PHED 2119.101 | SOPHOMORE VOLLEYBALL-WOMEN'S (VARSITY) I | MTWRF | 6:00PM | 8:40PM | GYM-100 | Reyna, Hollie E |
| PHED 2122.101 | SOPHOMORE RANCH HORSE TEAM I | MW | 6:00PM | 9:00PM | LEC-100 | Franks, Bret |
| PHED 2123.101 | SOPHOMORE SOFTBALL WOMEN VARSITY I | MTWRF | 1:00PM | 3:50PM | SBLD-1 | Hawkins, Raquel R |
| PHED 2125.111 | SOPHOMORE RODEO - VARSITY I | MWF | 4:00PM | 6:00PM | LEC-100 | Heck, Cody |
| PHED 2126.101 | SOPHOMORE CROSS COUNTRY WOMEN'S VARSITY I | MTWRF | 7:00AM | 8:30AM | GYM-100 | Laggett, Zack |
| PHED 2127.101 | SOPHOMORE CROSS COUNTRY MEN'S VARSITY I | MTWRF | 7:00AM | 8:30AM | GYM-100 | Laggett, Zack |
| PHED 2154.101 | TAPING AND BANDAGING | M | 9:00AM | 9:55AM | ADMIN-100 | McIntosh, Devin |
| PHED 2356.101 | CARE & PREVENTION OF AT. INJURIES | MWF | 8:00AM | 8:55AM | ADMIN-102 | McIntosh, Devin |
| PHILOSOPHY | | | | | | |
| PHIL 1316.101 | HISTORY OF RELIGIONS | TR | 1:00PM | 2:20PM | ADMIN-102 | Wood, Lance |
| PHYSICS | | | | | | |
| PHYS 1401.101 | COLLEGE PHYSICS I LAB | R | 1:00PM | 3:20PM | ADMIN-107 | Sain, Jeremy |
| PHYS 1401.101 | COLLEGE PHYSICS I | MWF | 10:00AM | 10:55AM | HSA-102 | Sain, Jeremy |
| PHYS 2426.101 | CALCULUS BASED PHYSICS LAB | R | 1:00PM | 3:20PM | ADMIN-107 | Sain, Jeremy |
| PHYS 2426.101 | CALCULUS BASED PHYSICS | MWF | 10:00AM | 10:55AM | HSA-102 | Sain, Jeremy |
| PSYCHOLOGY | | | | | | |
| PSYC 1100.101 | ORIENTATION - COLLEGE SCOPE | M | 8:00AM | 8:55AM | ADMIN-104 | N/A |
| PSYC 1100.102 | ORIENTATION - COLLEGE SCOPE | T | 8:00AM | 8:55AM | HSA-102 | N/A |
| PSYC 1100.103 | ORIENTATION - COLLEGE SCOPE | R | 12:00PM | 12:50PM | ADMIN-106 | N/A |
| PSYC 1100.104 | ORIENTATION - COLLEGE SCOPE | W | 8:00AM | 8:55AM | HSA-102 | N/A |
| PSYC 1100.105 | ORIENTATION - COLLEGE SCOPE | T | 11:00AM | 11:55AM | HSA-102 | Vandon Boogaard, Brad |
| PSYC 1100.106 | ORIENTATION - COLLEGE SCOPE | M | 8:00AM | 8:55AM | HSA-102 | Vandon Boogaard, Brad |
| PSYC 2301.101 | GENERAL PSYCHOLOGY | MWF | 9:00AM | 9:55AM | ADMIN-103 | Denney, Carl G |
| PSYC 2301.102 | GENERAL PSYCHOLOGY | TR | 11:00AM | 12:20PM | ADMIN-103 | Denney, Carl G |
| PSYC 2314.101 | LIFESPAN GROWTH AND DEVELOPMENT | TR | 9:30AM | 10:55AM | ADMIN-103 | Denney, Carl G |
| RANCH AND FEEDLOT OPERATIONS | | | | | | |
| AGAH 1343.101 | ANIMAL HEALTH | MTWRF | 9:00AM | 4:00PM | CRSN-101 | Tabbas, Laban W |
| AGAH 1353.101 | BEEF CATTLE PRODUCTION | MTWRF | 9:00AM | 4:00PM | CRSN-101 | Tabbas, Laban W |
| AGAH 2209.101 | RANCH & FEEDLOT JOBS & DEVELOPMENT | MTWRF | 9:00AM | 4:00PM | CRSN-101 | Tabbas, Laban W |
| AGCR 1307.101 | RANGE MANAGEMENT | MTWRF | 9:00AM | 4:00PM | CRSN-101 | Tabbas, Laban W |
| AGCR 2313.101 | SOIL & WATER CONSERVATION MANAGEMENT | MTWRF | 9:00AM | 4:00PM | CRSN-101 | Askew, Dale |
| AGMC 1444.101 | AGRICULTURAL RECORDS MANAGEMENT | MTWRF | 9:00AM | 4:00PM | CRSN-101 | Askew, Dale |
| SOCIOLOGY | | | | | | |
| SOCI 1301.101 | INTRODUCTORY SOCIOLOGY | MWF | 11:00AM | 11:55AM | ADMIN-103 | Denney, Carl G |
| SOCI 1301.102 | INTRODUCTORY SOCIOLOGY | TR | 12:25AM | 1:50PM | ADMIN-103 | Denney, Carl G |
| SOCI 1306.101 | SOCIAL ISSUES | MWF | 8:00AM | 8:55AM | ADMIN-106 | Denney, Carl G |
| SPEECH | | | | | | |
| SPCH 1315.101 | PUBLIC SPEAKING | MWF | 10:00AM | 10:55AM | ADMIN-105 | Cump, Charla A |
| SPCH 1315.102 | PUBLIC SPEAKING | MWF | 11:00AM | 11:55AM | ADMIN-105 | Cump, Charla A |
| SPCH 1316.101 | PUBLIC SPEAKING | TR | 9:30AM | 10:50AM | ADMIN-105 | Cump, Charla A |
| SPCH 1318.101 | INTERPERSONAL COMMUNICATION | MWF | 9:00AM | 9:55AM | ADMIN-105 | Cump, Charla A |
| SPCH 1318.102 | INTERPERSONAL COMMUNICATION | TR | 11:00AM | 12:20PM | ADMIN-105 | Cump, Charla A |
| SPCH 1321.101 | BUSINESS AND PROFESSIONAL COMMUNICATION | TR | 9:30AM | 10:50AM | ADMIN-203 | Ewing, Cynthia A |
| VOCATIONAL NURSING | | | | | | |
| VNSG 1226.101 | GERONTOLOGY | MTWRF | 8:00AM | 5:00PM | NURS-102 | N/A |
| VNSG 1227.101 | ESSENTIALS IN MEDICATION ADMIN | MTWRF | 8:00AM | 5:00PM | NURS-102 | N/A |
| VNSG 1231.101 | PHARMACOLOGY | MTWRF | 8:00AM | 5:00PM | NURS-102 | N/A |
| VNSG 1260.101 | CLINICAL I | MTWRF | 8:00AM | 5:00PM | NURS-102 | N/A |
| VNSG 1304.101 | FOUNDATIONS OF NURSING | MTWRF | 8:00AM | 5:00PM | NURS-102 | N/A |
| VNSG 1592.101 | APPLIED NURSING SKILLS I | MTWRF | 8:00AM | 5:00PM | NURS-102 | N/A |
| WELDING | | | | | | |
| DTGT 1325.101 | BLUEPRINT READING AND SKETCHING | MTWR | 11:00 AM | 11:55 AM | VTCH-1 | N/A |
| DTGT 1325.101 | BLUEPRINT READING AND SKETCHING LAB | N/A | N/A | N/A | N/A | N/A |
| WLDG 1204L.101 | FUNDAMENTALS OXY-FUEL WELDING/CUTTING LAB | MTWR | 1:00PM | 5:30PM | VTCH-1 | N/A |
| WLDG 1204L.111 | FUNDAMENTALS OXY-FUEL WELDING/CUTTING LAB | MTWR | 5:30PM | 10:00PM | VTCH-1 | N/A |
| WLDG 1204L.121 | FUNDAMENTALS OXY-FUEL WELDING/CUTTING LAB | MTWR | 5:30PM | 10:00PM | VTCH-1 | N/A |
| WLDG 1204L.131 | FUNDAMENTALS OXY-FUEL WELDING/CUTTING LAB | MTWR | 5:30PM | 10:00PM | VTCH-1 | N/A |
| WLDG 1317L.101 | INTRO TO LAYOUT AND FABRICATION LAB | MTWR | 1:00PM | 5:30PM | VTCH-1 | N/A |
| WLDG 1317L.111 | INTRO TO LAYOUT AND FABRICATION LAB | MTWR | 5:30PM | 10:00PM | VTCH-1 | N/A |
| WLDG 1317L.121 | INTRO TO LAYOUT AND FABRICATION LAB | MTWR | 1:00PM | 5:30PM | VTCH-1 | N/A |
| WLDG 1317L.131 | INTRO TO LAYOUT AND FABRICATION LAB | MTWR | 5:30PM | 10:00PM | VTCH-1 | N/A |
| WLDG 1428L.101 | INTRO SHIELD METAL ARC WELDING LAB | MTWR | 5:30PM | 10:00PM | VTCH-1 | N/A |
| WLDG 1428L.111 | INTRO SHIELD METAL ARC WELDING LAB | MTWR | 5:30PM | 10:00PM | VTCH-1 | N/A |
| WLDG 1428L.121 | INTRO SHIELD METAL ARC WELDING LAB | MTWR | 1:00PM | 5:30PM | VTCH-1 | N/A |
| WLDG 1428L.131 | INTRO SHIELD METAL ARC WELDING LAB | MTWR | 5:30PM | 10:00PM | VTCH-1 | N/A |
| DISTANCE EDUCATION • FALL 2013 | | | | | | |
| COURSE ID | COURSE TITLE | LOCATION | INSTRUCTOR | LIMIT | | |
| BUSINESS COMPUTER INFORMATION SYSTEMS | | | | | | |
| BCIS 1305.195 | BUSINESS COMPUTER APPLICATIONS | ONLINE | Denney, Pamela | | | |
| BIOLOGY | | | | | | |
| BIOL 1322.195 | NUTRITION AND DIET THERAPY I | ONLINE | Estlack, Russell A | | | |
| BUSINESS | | | | | | |
| BUSI 1301.195 | BUSINESS PRINCIPLES | ONLINE | Ewing, Cynthia A | | | |
| BUSI 2301.195 | BUSINESS LAW | ONLINE | Ewing, Cynthia A | | | |
| CRIMINAL JUSTICE | | | | | | |
| CRJU 1301.195 | INTRODUCTION TO CRIMINAL JUSTICE | ONLINE | Jeffrey, Selena K | | | |
| CRJU 1313.195 | JUVENILE JUSTICE SYSTEM | ONLINE | Jeffrey, Selena K | | | |
| DRAMA | | | | | | |
| DRAM 1316.195 | INTRODUCTION TO THE THEATER | ONLINE | Huey, William R | | | |
| ECONOMICS | | | | | | |
| ECON 2301.195 | PRINCIPLES OF MACROECONOMICS | ONLINE | Taylor, Robert H | | | |
| ENGLISH | | | | | | |
| ENGL 1301.195 | COMPOSITION I | ONLINE | Baxter, Rosemary N | | | |
| ENGL 1302.195 | COMPOSITION II | ONLINE | McCoy, Melissa L | | | |
| ENGL 2311.195 | TECHNICAL AND BUSINESS WRITING | ONLINE | Haynes, Linda A | | | |
| ENGL 2332.195 | WORLD LITERATURE I | ONLINE | McCoy, Melissa L | | | |
| GOVERNMENT | | | | | | |
| GOVT 2305.195 | US FEDERAL GOVERNMENT | ONLINE | Jeffrey, Selena K | | | |
| HISTORY | | | | | | |
| HIST 1301.195 | UNITED STATES HISTORY I | ONLINE | Fulfer, Brian A | | | |
| HIST 1302.195 | UNITED STATES HISTORY II | ONLINE | Fulfer, Brian A | | | |
| HIST 2312.195 | WESTERN CIVILIZATION II | ONLINE | Fulfer, Brian A | | | |
| MATHEMATICS | | | | | | |
| MATH 1314.195 | COLLEGE ALGEBRA | ONLINE | Sain, Jeremy | | | |
| MUSIC | | | | | | |
| MUSI 1306.195 | MUSIC APPRECIATION | ONLINE | Pilot, Lewis | | | |
| PHYSICAL EDUCATION | | | | | | |
| PHED 1110.195 | WALKING FOR FITNESS | ONLINE | Laggett, Zack | | | |
| PHED 1124.195 | CARDIOVASCULAR FITNESS | ONLINE | Laggett, Zack | | | |
| PHED 1304.195 | PERSONAL/COMMUNITY HEALTH I | ONLINE | Vandon Boogaard, Brad | | | |
| PHED 1336.195 | INTRODUCTION TO RECREATION I | ONLINE | Vandon Boogaard, Brad | | | |
| PSYCHOLOGY | | | | | | |
| PSYC 2301.195 | GENERAL PSYCHOLOGY | ONLINE | Denney, Carl G | | | |

Obituaries

Brace

Vontina Williams Brace passed away July 27, 2013.

She was born on December 18, 1973, to the late Edgar Lee Williams, Jr. and Mozell Davis Williams in Charleston, MS.



Brace

Vontina graduated from Clarendon College school of nursing and worked for various doctors, hospitals, nursing homes, and agencies though out the Panhandle area.

Vontina was baptized on October 26, 1991, as one of Jehovah's

Witnesses while living in Clarksdale, MS.

In 1992 she began serving in the full-time ministry and continued to do so until her death. She served in Clarksdale, Marks, and Charleston, MS as well as in Shamrock, Pampa, Childress, and Clarendon. She taught Bible studies in eight languages not including Spanish or English. She served many years with the Regional Building Committee of Jehovah's Witnesses.

On March 23, 2013, Vontina married Colburn Brace and moved to Wichita, Kan., and served in the full-time ministry with the Sign Language Wichita Congregation (ASL) until her sudden and unexpected death.

She is preceded in death by her father Edgar Lee Williams, Jr., grandfather Edgar Lee Williams, Sr., and grandmother Beulah Williams.

She leaves to cherish her memory her loving husband, Colburn

Brace; mother, Mozell Williams; grandmother, Hosie Davis; two siblings, Shondra Rhodes (Owen) and Ebony Williams (Kelvin); two step-daughters, Michelle Brace and Jessica Brown; two step-sons, Matthew Brace and James Brace; five nieces, Shauntel Morris, Catera Thompson, Dasha Tillis, Mozell Williams, and Jasmine Rhodes; one nephew, Vondrell Warren; one great niece, Shantyla Moore; two aunts, Tammy Davis and Dorothy Davis; two uncles, William Davis and Willie Williams; six cousins; and a host of other relatives along with many dear friends near and far.

A memorial service will be held on Saturday, August 17, 2013, at 1:00 p.m. at Parkway Kingdom Hall, 1717 South Manhattan, in Amarillo. In lieu of flowers, there has been a memorial fund established at Wells Fargo Bank under the name Vontina Williams Brace Memorial Fund.

POSITIVE FEED SALES

All-In-One 30%
Supplement for Cattle
Brangus Heifers For Sale
DANNY ASKEW
874-5001 or 874-3844

Kenny's Barber Shop and Clarendon Auto Sales

3rd & Jefferson, Clarendon
874-9308
We appreciate your business!

Sandell Drive-In

DOUBLE FEATURE:
DisneyToon Studios
PLANES
Rated PG
Columbia Pictures
WE SMOKES 2
Rated PG
SHOWING Fri, Sat, Sun
August 9th, 10th, 11th
Show starts at dusk.
Gates open at 7:30.
All Tickets - \$7.00
Like us on facebook or check us out at www.sandelldrivein.com

Be Loyal. Buy Local.
Support the merchants who support
your community.

ACE PEST CONTROL
"Is your place an ace place?"
Terry & Jason Wheeler, C.A. TPCL 10615
www.acepestcontrol.pro
806-372-5449
ace.pest@yahoo.com
We Specialize in General Pest, Termites, Pretreatments
TERMITE SEASON FAST APPROACHING. CALL US FOR INSPECTIONS.

TOP-O-TEXAS PLUMBING
Best Prices - The Water Heater Bargain House
New Water, Sewer & Gas Lines. Leaks Repaired
Amarillo, TX, "No Mileage or Travel Charge"
Phone: 800-693-3406 - Fax: 806-350-7981
Texas Master Plumber License # M-20046 WSPS
55 Years Experience.
"Call a Professional"
VISA MasterCard DISCOVER

GLASSTECH WINDSHIELD REPAIR
Larry & Donna Hicks
Call Donna at
806-874-3108
806-205-1501
Before After
SEAL THAT CHIP BEFORE IT SPLITS!

Employment law seminar planned in Amarillo

Sprouse Shrader Smith P.C. is pleased to host the 12th Annual Labor and Employment Law Seminar.

The seminar will take place September 12, 2013 at the Amarillo College Business Center located at 1314 S. Polk, Amarillo, Texas 79101. This all day event for HR professionals and business owners will include discussion topics such as federal employment law updates, state employment law updates, ObamaCare updates, disability and

leave compliance tools, wage and hour compliance tools, and human resources topics.

Shawn Twing, shareholder at Sprouse Shrader Smith P.C., will emcee the event. Mr. Twing is certified by the Texas Board of Legal Specialization in Labor and Employment Law. He received his law degree with honors in 1993 from the University of Arkansas. Mr. Twing has been a shareholder in the Sprouse Amarillo office since 2001.

Guest Speakers include Char-

lotte Bingham of Texas Tech University System, Michelle Bryson of Fuqua Bryson Benefits Group, Chip McCampbell of Bruckner Truck Sales, Laura Hale of Sprouse Shrader Smith P.C., Bryan Jepson of Sprouse Shrader Smith P.C., Hillary La Manna of Hunting Energy Services, and Susan Owens of the University of Mary Hardin-Baylor.

For more information on the event or to register, please contact: SprouseLaw.Events@sprouselaw.com OR 806.468.3300.

Host a foreign exchange student

American Cultural Exchange Service (ACES) a small dedicated non-profit educational exchange organization is asking all Americans to open their homes to a foreign high school student. Our foreign high school students are waiting to be hosted by American Families for the 2013-2014 school year or even a semester.

Students are from all over Japan, Korea, Asia, South America, and Europe. They all come with their own complete medical coverage and own personal spending monies for all their personal needs. All that is required is a bed to sleep in whether they have their own bedroom or share a bedroom, a place to eat and a place to do their homework, the stu-

dents all are academically sound and friendly and are willing to become a member of your family. They enjoy competitive tennis, volleyball, basketball, soccer, and other sports. These students also have other talents such as dancing. These students will help with everyday chores as a member of your family. And above all you as his/her family will gain a lifetime of experiences that will be positive ones you will never forget.

For the great opportunity of a lifetime please call me, for your local Area Coordination Kevin at 1-806-335-5857 now for your brochures on our students or call the ACES National office at 1-800-661-2237 or check us out at www.ExploreTheWorld.org.

Want to get
your news
FASTER



Get online with
Enterprise-D

OSBURN APPLIANCE AND SERVICE
Now Carrying New Appliances
Ranges • Refrigerators • Washers • Dryers
General Electric, Whirlpool, Frigidaire, and others
Rebuilt Used Appliances For Sale • Will Buy Used Appliances In Good Condition
874-3632 319 S. Kearney

Prices Good Thru 09/07/13

Labor Day Spectacular

ALLSUP'S BREAD



24 OZ.
WHITE OR WHEAT
MIX OR MATCH
1 AT REGULAR PRICE OR

2 FOR \$1.19

Western Family Paper Towels

roll 1 @ Reg. Price or **3 FOR \$2**

Western Family Bath Tissue
Petat Soft, 4 roll pkg.

..... 1 @ Reg. Price or **2 \$2.50 FOR**

STORE #48
701 WEST 2ND STREET
CLARENDON, TEXAS 79226
806-874-3906



KEEBLER CRACKERS
8 CT.
BUY 1, GET 1
FREE



BAR'S HAM OR TURKEY
THIN CUT LUNCH MEAT
ONE AT REG. PRICE OR
2 \$5 FOR



KELLOGG'S CEREAL CUPS
EACH
99¢

ALLSUP'S

EXTRA SAVINGS



BLUE BUNNY: COOKIES & CREAM,
STRAWBERRY SHORTCAKE, OR HEATH
ICE CREAM BARS
KING SIZE **79¢**



PRICE VALID: 8/11 - 10/5
BLUE BUNNY
ICE CREAM PERSONALS
EACH **99¢**

Pepsi Products
6 pack cans **\$1.99**

Gatorade Thirst Quencher
28 or 32 oz. btls. **2 \$3 FOR**

Big E Classifieds

**Call in your ad at
874-2259**

Deadline: Monday @ 5 p.m.
Prepayment required.
Visa / MasterCard accepted.



MEETINGS



Clarendon Lodge #700 AF&M
Stated meeting: Second Mondays,
7:30 p.m. Refreshments at 6:30
p.m. Practice: Fourth Mondays,
7 p.m. Jim Owens - W.M., Grett
Betts - Secretary, 2 B I, ASK I



Donley County Memorial Post
7782 Veterans of Foreign Wars
Meets first Tuesday at 7 p.m.
822-VEITS.



Clarendon Lions Club Regular
meeting each Tuesday at noon.
Ashlee Estlack, Boss Lion, Roger
Estlack, Secretary

Big E Meeting Listings only \$8.50 per month.
Call 874-2259 to have your club or organiza-
tion meeting listed.

ANNOUNCEMENTS

Saints' Roost Museum

610 East Harrington

Friday: 1 p.m. to 5 p.m.

Saturday: 10 a.m. to 5 p.m.

Open for appointments.

Call 874-2071.

FACILITIES AVAILABLE - Family Reunions,
Receptions, Business Meetings, Club Func-
tions, and more. Clarendon Lions Hall, 111
W. Fourth. Call Melinda at 874-3521 for rental
information.

PUBLISHER'S NOTICE: All real estate advertising in this news-
paper is subject to the Fair Housing Act which makes it illegal to
advertise "any preference, limitation, or discrimination based on
race, color, religion, sex, handicap, familial status, or national origin,
or an intention to make any such preference, limitation, or discrimi-
nation." This newspaper will not knowingly accept any advertising
for real estate which is in violation of the law. Our readers are
heavily informed that all dwellings advertised in this newspaper are
available on an equal opportunity basis. To complete a transaction,
call HUD toll-free at 1-800-669-9777. The toll-free telephone
number of the hearing impaired is 1-800-927-0275.

THANK YOU

THANK YOU for the prayers, cards, flowers,
and food after my accident. We appreciate
your thoughtfulness and friendship.
Larry Hicks

LEGAL NOTICE

PRIVATE CLUB ALCOHOL BEVERAGE PERMIT
The Country Club of Clarendon, Inc., 100
Porter Drive, Howardwick, Donley County,
Texas 79226, has applied for renewal of their
Private Club Alcoholic Beverage Permit. Offi-
cers of the club are: PJ Lemons, President;
Mark Morris, Vice President; Sherol Johnston,
Secretary/Treasurer.

HELP WANTED

HELP WANTED: in the Clarendon College Caf-
eteria for the upcoming Fall semester. Great
Western dining service has openings for part
time/evenings/weekend shift for general
workers, line servers, and cooks assistant,
also looking for a Saturday cook. There are
also openings for part time/full time/day shift
cooks assistants and salad bar prepares.
Experience in cooking and baking is helpful
but will train. Looking for dependable and
hard working individuals in a fast pace setting.
Please call the manager for an application at
806-336-3450 by August 21st.

Palo Duro Nursing Home

Claude, Texas

Has the Following

Positions available:

• Relief Cook – Full Time

Must be able to work

mornings, evenings, and

weekends as needed.

Call

806-226-5121

HELP WANTED

MECHANIC NEEDED: ASE certified preferred.
Monday-Friday, Competitive pay. Also Parts
Counter Position available. Send resumé to
Help Wanted, PO Box 1110, Clarendon, TX
79226. 21-ctc

BEST WESTERN RED RIVER INN is taking
applications for a FRONT DESK CLERK. Hours
are Saturday through Wednesday from 3pm-
11pm. Ideal candidate will enjoy working with
people and be able to multi-task. Please apply
in person.

COMMUNITY CARE CENTER OF CLARENDON
is looking to hire house keepers, a mainte-
nance director, transport driver, CNAs and
LIVN's. Pay based upon experience. Please
come by the front office and pick up an appli-
cation. 5-ctc

JP CLERK NEEDED

Donley County JP 1&2 in Clarendon is seek-
ing a part time 20 hrs/week clerk. Must
have good typing and computer skills. Pick
up applications at the JP office in Clarendon,
and return them there before noon on Friday,
August 16, 2013. Donley County is an equal
opportunity employer. Donley County reserves
the right to reject or accept any or all applica-
tions.

HELP WANTED

Applications are now being accepted at the TX
Cooperative Inspection Program for the follow-
ing seasonal positions:

Inspector I
Analyze peanut samples for quality & con-
dition. High School graduate or the equivalent.
Beneficial if able to travel or relocate tempo-
rarily. \$1,472.00 Monthly - \$8,492.33 Hourly.
Training provided.

Ades & Sample Pullers
Assist inspector in grading, pulling samples &
other duties as assigned. \$1,256.67 Monthly -
\$7.25 Hourly.

TCIP policy - drug free, EOE
Multiple positions throughout the state. Able to
work 7 days a week. Lots of O.T. possible.

For more information please call or come by
304 S. Kent Street, Gorman, TX (254) 734-
3006 or
412 W. Tate, Brownfield, TX (806) 637-8381

FOR SALE

HAY FOR SALE - Timothy, Brome & Alfalfa.
654-0599, 52-ctc

5 FT ROUND BALES of hay grazers for sale
\$60 per bale. Call (806)382-6162.

FOR SALE: brown microfibre couch and
love-seat. Both ends recline. 3 years old. 325-
721-7512

RENT

FOR RENT: Large 2 bed and bath mobile
home. 1015 East 3rd Street. 874-3934

FOR RENT: 3 bed and 2 bath mobile home.
311 South Faker Street. 874-3934

HOUSE FOR RENT: 2 or 3 bedroom, 1
bath, central heat and air, appliances
available if needed. Call 205-0270 for
more information.

GARAGE SALE

GARAGE SALE: 925 West 6th. 8:00 a.m. - ?
Saturday, August 17.

414 SOUTH CARHART: 8:00 a.m. - 1:00 p.m.
Deep freezer, hide-a-bed, antique bed, holiday
decorations, kitchen stuff, and miscellaneous.
Cheap.

SERVICES

STEVE PHELPS PLBG, HTG & AC Service,
Repair & Parts 806-874-1675 M12746
TAC83255E

ROTTOTILLING, BRUSH HOGGING, MOWING,
handyman services, and gopher control. Call
Jobots Services today for your free estimate
806-205-0270. 11-ctc

PAINTING SERVICES for your home,
business, or property. Interior, exterior,
ranches, equipment, one room, one trailer,
or your whole house. Pro Painters 806-
205-2139. 52-2ip

REAL ESTATE

Jim Garland Real Estate MLS
806-874-3757

• 169.42 acs. Ashtola. Well, Pens, Shed.
Surrounded by irrigated crops, deer, and birds.

LINDA M. NAYLOR REAL ESTATE
Providing a Personal Touch!
Texas Licensed Real Estate Broker
License # 604414
Cell Phone: (806) 204-0005
403 N. Johnson St., Hedley, Texas 79237

e-mail: lynnaylor@windstream.net www.lmynaylorschealestate.com

260 Smidich Circle: A fisherman's delight. 3/4 bedroom, 1 full bath, 1 3/4 bath, RV Port, garage, established landscape, Fenced backyard, nice cellar under covered patio. Sits on 4 Lots \$59,500.00

Brick house at 1112 West 8th in Clarendon, 2 bedroom, 1 bath. Detached garage with studio apartment, carport, fenced backyard. Needs some TLC. Price reduction \$40,000.

92.89 Acres of farm land with Hwy 287 frontage, irrigation well, and domestic well, 1860 sq.ft. residence. \$150,000.00.

Remodeled Brick Home with 1705 sq. ft. 3 bedrooms, 1 full bath, and 1 3/4 bath. Second living area/ 4th bedroom. 618 S. Parks. House sits on 2 corner lots. \$79,000.00.

House for Sale at 1014 S. Taylor: Newly Remodeled \$57,000.00 Owner Financing is Optional with 20% Down and Financial Records.

Newly Renovated Move-in Ready Homes: Majority have New Windows, Insulation, Dry Wall, Flooring, Roofs, Central H/A, and Kitchen appliances stay with the Houses. Excellent Rental Properties or Personal Homes: A Package Deal may be Negotiated.

505 S. Kearney Rd - UNDER CONTRACT @ \$110,000.00.

314 E. 3rd St.: two-story 3 Bedroom/2 Bath, two-car garage \$99,500.00

710 S. Goodnight: 3 Bedroom/2 Bath w/ garage apartment \$59,900.00

406 E. 2nd: 287 Frontage, 3 Bedroom/ 1 Bath, Garage, Screened-in Courtyard \$53,500.00

1014 S. Parks: 3 Bedroom/2 Bath, on the edge of town, w/ 8 Lots for horses. \$125,000.00

Pictures at lmmaylorschealestate.com

STATE & REGIONAL

TEXAS STATEWIDE CLASSIFIED ADVERTISING NETWORK



**TexSCAN Week of
August 11, 2013**

BUSINESS OPPORTUNITY

GUARANTEED INCOME for your retirement.
Avoid market risk & get guaranteed income
in retirement! Call for a free copy of our
safe money guide plus annuity quotes from
A-Rated companies. 1-800-349-0643

DRIVERS

ATTENTION DEDICATED and regional
drivers. Averitt offers excellent benefits and
hometime. CDL-A required 1-888-362-8608.
Recent grads with a CDL-A, paid training.
Apply online at AverittCareers.com, EOE

DRIVERS - Year-round, recession-proof
freight plus performance bonuses. Pets,
riders, late-model/new equipment. Excel-
lent support system. 6-months OTR
required. Refresher training program for
3-6 months experience. 1-888-440-2465.
www.DriveNCL.com

DRIVERS - \$2500 BONUS plus \$500 for
orientation. Team drivers needed to haul
ammo and explosives. 2-years experience/
hazmat req'd. Avg. \$1100-\$1400 per week.
1-800-835-9471. Roadmastergroup.com

DRIVERS - \$2500 sign-on bonus! Heavy haul
O/O's. Up to 78% of freight bill plus FSC!
CDL-A. 2-years experience hauling oversize
freight required. 1-800-835-9471

DRIVERS - HIRING EXPERIENCED/INEX-
PERIENCED Tanker drivers! Earn up to 51¢
per mile! New fleet Volvo tractors! 1-year
OTR Experience required. Tanker training
available. Call Today: 1-877-882-6537; www.OakleyTransport.com

DRIVERS - IMMEDIATE OPENINGS Expe-
rienced drivers and owner operators. Com-
petitive pay scale. Students welcome, deBoer
Transportation. 1-800-825-8511, www.deboertrans.com

EXPERIENCED DRIVERS - Dedicated oppor-
tunity in South TX! Oilfield opportunity with
excellent earning potential! Avg. \$70K annually.
Full Benefits and 24/7 dispatch. Arnold Trans-
portation; www.drivearnold.com 1-855-861-0124

EXPERIENCED DRIVERS: Excellent regional
runs! Great home time & benefits! Up to 40¢
per mile, weekly pay, and late model equip-
ment. Arnold Transportation: www.drivearnold.com
1-888-742-8056

OWNER OPERATORS and Fleet driv-
ers. 2800-3200 miles/week average.
All miles paid. Home weekly, fuel
surcharge, paid plates and permits.
Weekly settlements. 1-888-720-1565 or
ParkwayTransportInc.com

PARTNERS IN EXCELLENCE OTR driv-
ers APU equipped, pre-pass, EZ-pass,
passenger policy. 2012 and newer equip-
ment. 100% NO touch. Butler Transport
1-800-528-7825

PAID CDL Training! No experience needed.
Stevens Transport will sponsor the cost of your
CDL training. Earn up to \$40K first year and
\$70K third year. Excellent benefits, 1-888-726-
4130, www.becomeadriverr.com. EOE

EXPERIENCED FLATBED DRIVERS
Regional opportunities now open with plenty
of freight and great pay. 1-800-277-0212 or
primeinc.com

EXCHANGE STUDENTS

HOST AN EXCHANGE Student! Families
provide a bed, meals and caring environment.
Students come from Germany, Mongolia,
France, Brazil. Call for more info: 1-800-941-
3738/ www.sharesouthwest.org

TECHNICAL TRAINING

AIRLINE CAREERS begin here. Become
an Aviation Maintenance Technician. FAA
approved training. Financial aid if qualified.
Housing available, job placement assis-
tance. Call Aviation Institute of Mainte-
nance. Dallas: 1-800-475-4102 or Houston:
1-800-743-1392

HELP WANTED

MEDICAL BILLING TRAINEES needed!
Train to become a medical office assistant
now! Online job training gets you ready.
Job placement when program completed.
Call for details! 1-888-368-1638; ayers.edu/disclosures.com.

REAL ESTATE

\$106 MONTH BUYS land for RV, MH
or cabin. Gated entry, \$690 down,
(\$6900/10.91%/7yr) 90-days same as cash,
Guaranteed financing, 1-936-377-3235

ABSOLUTELY THE BEST VIEW Lake
Medina/Bandera, 1/4 acre tract, central
W/S/E, RV, MH or house OK only \$830
down, \$235 month (12.91%/10yr), Guar-
anteed financing, more information call
1-830-460-8354

ACREAGE REPO with septic tank, pool,
pier, ramp. Owner finance. Granbury
1-210-422-3013

AFFORDABLE RESORT LIVING on Lake
Fork. RV and manufactured housing OK!
Guaranteed financing with 10% down.
Lots starting as low as \$6900. Call Josh,
1-903-878-7265

STEEL BUILDINGS

STEEL BUILDING for Garages, shops,
shelters and homes. Save thousands on
clearance buildings. 20x24, 25x32, 30x40,
35x56, Low monthly payments. Call now
1-800-991-9251 ask for Ashley.

VACATION

WEEKEND GETAWAY available on Lake
Fork, Lake Livingston or Lake Medina.
Rooms fully furnished! Gated community
with clubhouse, swimming pool and boat
ramps. Call for more information: 1-903-878-
7265, 1-936-377-3235 or 1-830-460-8354

Run Your Ad In TexSCAN!

Statewide Ad.....\$550

290 Newspapers, 905,076 Circulation

North Region Only.....\$250

94 Newspapers, 301,619 Circulation

South Region Only.....\$250

100 Newspapers, 391,741 Circulation

West Region Only.....\$250

96 Newspapers, 211,716 Circulation

To Order: Call this Newspaper
direct, or call Texas Press Service
at 1-800-749-4793 Today!

Visit
www.joetlovellrealestate.com
to view pictures and details.

CLARENDON

**HOUSE AND 2 1/2 ACRES, M/L OF BEST COMMERCIAL DEVELOPMENT
PROPERTY IN CLARENDON** - some modern upgrades - potential for more -
PROPERTY HAS FRONTAGE ON US HWY 287 ON NORTH, SIMS ST ON WEST
AND 3RD ST ON SOUTH - an excellent investment for \$135,000.

GREENBELT LAKE

2 BEDROOM - 2 BATH - NEW central h/a - NEW windows - NEW flooring - Chain
link fenced yards - lots of trees - on 7 lots @ 120 Diane - ~~\$75,000~~ PRICE REDUCED
TO \$71,500.

3 BEDROOM - 4 BATH - WITH NEW ROOF - large tress & lots of shrubbery -
deer, turkey and wild birds enjoy this place and so will you - West side of lake on Lease
Lots #27 - for ~~\$145,000~~ REDUCED TO 137,500.

HEDLEY

GILES COMMUNITY - 3 b/r - 2 baths on 1.27 acres with abundant deer & turkey
@ 3606 CR 29 for ~~\$69,500~~ ****MAJOR REDUCTION - NEW PRICE \$59,500 ****

FARM & RANCH LAND

(sold out - need listings)

Find your home in the Big-E Classifieds!

Want to Reach almost a Million Readers?



You can for only

\$550

Contact this newspaper for
more information or visit
www.texaspress.com
Regions available.

Look what
America
NOTICED!

- School district budgets
- Property auctions
- Public hearings
- Local tax changes
- Adoptions

Find out about these and more in your local paper!
Participate in Democracy.
Read your Public Notices.

NOTICE: While most advertisers are reputable, we cannot guarantee products or services advertised. We urge readers to use caution and when in doubt,
contact the Texas Attorney General at 1-800-621-0508 or the Federal Trade Commission at 1-877-FTC-HELP. The FTC web site is www.ftc.gov/bizop

Extend your advertising reach with TexSCAN, your Statewide Classified Ad Network.

Year Of Faith Celebration to be held

Preparations continue for the Diocesan Year of Faith Celebration, set for Saturday, Sept. 14 at the Amarillo Civic Center.

All Catholics in the Diocese of Amarillo are invited to take part in this celebration.

Activities will begin at 9:30am with Morning Prayer, followed with opening comments from Bishop Patrick J. Zurek and a multimedia presentation entitled "Who Are We?," featuring the people of the parishes in the Diocese of Amarillo.

There will be three keynote addresses given during the Year of Faith celebration. The first will be given at 11:00 by Bishop Zurek, with Father Gabriel Garcia, OFM, parochial administrator of Sts. Peter and Paul Church, Dumas, providing translation in Spanish, on the topic Faith in the Marketplace.

After lunch at noon, two additional keynote addresses will be presented. Cardinal Óscar Andrés Rodríguez Maradiaga, Archbishop of Tegucigalpa, Honduras, will give a talk on The New Evangelization

Through the Lens of Charity. Dr. Wendy M. Wright, Professor of Theology at Creighton University, who will talk about The Domestic Church, Faith Expressions and the Tools Needed.

Cardinal Rodriguez is a native of Tegucigalpa, Honduras. He was ordained to the priesthood for the Salesians of St. John Bosco on June 28, 1970 and appointed Auxiliary Bishop of Tegucigalpa on Oct. 28, 1978.

After being appointed Archbishop of Tegucigalpa on Jan. 8, 1993, he was created a Cardinal on Feb. 21, 2001. He was a participant in both the 2005 and 2013 Conclaves. Cardinal Rodriguez is in his second term as president of Caritas International and was president of the Latin American Episcopal Conference (CELAM) from 1995 to 1999.

This is Cardinal Rodriguez's third visit to the Diocese of Amarillo, having participated in the Eucharistic Congress on Aug. 23-24, 2002 and attending Bishop Zurek's Installation Mass on Feb. 22, 2008.

The celebration will conclude at 4:00 with a Liturgical Procession, followed by Mass in the Civic Center Auditorium, with Cardinal Rodriguez delivering the homily. This will be the only Mass celebrated in the Diocese of Amarillo on Sept. 14, according to Bishop Zurek.

"There are to be no diocesan or parish activities scheduled on Sept. 14," he said. "There will be no Parish or Convent Masses to be celebrated that day. The ONLY Eucharist will be celebrated at the Amarillo Civic Center. We ask all Catholics to please make plans to participate in this diocesan celebration."

Those who are planning to attend should sign up at their parishes on the registration form in the parish office.

For additional information about the Diocesan Year of Faith Celebration, please call Sister Janet M. Abbacchi, SSND, Coordinator of Faith Formation for the Diocese of Amarillo at the Diocesan Pastoral Center at 383-2243, ext. 113.

CRP:

Continued from page one.

fiscal year runs from October 1 to September 30.

"The grazing extension was approved by the Texas FSA State Committee in order to provide more resources for livestock producers facing forage and feed shortages as a result of drought," said Killian.

The eligible CRP acreage is limited to qualified acres located within the approved county. Eligible producers who are interested in grazing CRP under this emergency authorization and current CRP participants who choose to provide land for grazing to an eligible livestock producer, must first request approval from their local FSA office and obtain a modified conservation plan from the NRCS to include site specific grazing requirements.

For more information, contact the Donley County FSA office at 806-874-3561.



Back to school

In-coming fifth grader Aubrey Jaramillo smiles as her mother Mandy fills out the paperwork for her to register for classes at Clarendon ISD Monday evening.

ENTERPRISE PHOTO / ROGER ESTLACK

Be Loyal. Buy Local.
Support your local merchants.

Send your student or teacher your support with a Back To School floral arrangement from Country Bloomers Today!

Back 2 School

Country Bloomers Flowers & Gifts

Clarendon, Texas • 806.874.2508
www.countrybloomers.com

Like music, charms bring joy to our lives – touching our hearts and reflecting our unique emotions, style and creativity.

AUGUST 9TH - AUGUST 25TH, 2013

it's a keeper!

With a single same-day Brighton purchase of \$100 or more, receive your very own "It's a Keeper Jewelry Box absolutely FREE!

Every Nook and Cranny

Downtown Clarendon • 806-874-3335

*Limit one per customer, while supplies last. Purchase total includes merchandise only. Gift Cards and sales tax not included. All participating retailers only. It's a Keeper Jewelry Box. Retail value \$30.75 x 7" x 3.5" (Jewelry and Charms shown sold separately.)

2013 Property Tax Rates in Donley County

This notice concerns 2013 property tax rates for Donley County.

It presents information about three tax rates. Last year's tax rate is the actual rate the taxing unit used to determine property taxes last year. This year's effective tax rate would impose the same total taxes as last year if you compare properties taxed in both years. This year's rollback tax rate is the highest tax rate the taxing unit can set before taxpayers can start tax rollback procedures. In each case these rates are found by dividing the total amount of taxes by the tax base (the total value of taxable property) with adjustments as required by state law. The rates are given per \$100 of property value.

| | General Fund | County Special |
|---|-----------------|-----------------|
| Last year's tax rate: | | |
| Last year's operating taxes | 885,416.70 | 198,726.83 |
| Last year's debt taxes | 153,068.58 | 0.00 |
| Last year's total taxes | 1,038,485.28 | 198,726.83 |
| Last year's tax base | 205,331,635 | 202,617,075 |
| Last year's total tax rate | 0.505760 /\$100 | 0.098080 /\$100 |
| This year's effective tax rate: | | |
| Last year's adjusted taxes (after subtracting taxes on lost property) | 793,603.97 | 179,054.41 |
| + This year's adjusted tax base (after subtracting value of new property) | 184,425,228 | 183,150,728 |
| = This year's effective tax rate for each fund | 0.430312 /\$100 | 0.097763 /\$100 |
| Total effective tax rate | 0.528075 /\$100 | 0.097763 /\$100 |
| (Maximum rate unless unit publishes notices and holds hearings.) | | |
| This year's rollback tax rate: | | |
| Last year's adjusted operating taxes (after subtracting taxes on lost property and adjusting for any transferred function, tax increment financing, state criminal justice mandate, and/or enhanced indigent health care expenditures) | 793,604 | 179,054 |
| + This year's adjusted tax base | 184,425,228 | 183,150,728 |
| = This year's effective rate | 0.430312 /\$100 | 0.097763 /\$100 |
| x 1.08 = this year's maximum operating rate | 0.464736 /\$100 | 0.105584 /\$100 |
| + This year's debt rate | 0.075579 /\$100 | 0 /\$100 |
| = This year's rollback rate for each fund | 0.540315 /\$100 | 0.105584 /\$100 |
| This year's total rollback rate | 0.645899 /\$100 | |

Statement of Increase/Decrease

If Donley County adopts a 2013 tax rate equal to the effective tax rate of \$ 0.528075 per \$100 of value, taxes would decrease compared to 2012 taxes by \$ 163,158.00.

Schedule A — Unencumbered Fund Balances

The following estimated balances will be left in the unit's property tax accounts at the end of the fiscal year. These balances are not encumbered by a corresponding debt obligation.

Table with 4 columns: Type of Property Tax Fund, Ad Valorem, I & S, Balance.

Schedule B — 2013 Debt Service

The unit plans to pay the following amounts for long-term debts that are secured by property taxes. These amounts will be paid from property tax revenues (or additional sales tax revenues, if applicable).

Table with 5 columns: Description of Debt, Principal or Contract Payment to be Paid from Property Taxes, Interest to be Paid from Property Taxes, Other Amounts to be Paid, Total Payment.

Schedule D — State Criminal Justice Mandate (For Counties)

The Donley County Auditor certifies that Donley County has spent \$84,168.00 in the previous 12 months beginning October 1, 2012, for the maintenance and operations cost of keeping inmates sentenced to the Texas Department of Criminal Justice. County Sheriff has provided information on these costs, minus the state revenues received for reimbursement of such costs.

This notice contains a summary of actual effective and rollback tax rates' calculations. You can inspect a copy of the full calculations at the Auditorial District office at 204 S. Kearney St. Clarendon Texas

Name of person preparing this notice: Paula Lawrie
Title: Chief Auditor
Date prepared: 8/8/2013

Attention Former & Current Workers at the

PANTEX NUCLEAR FACILITY

You helped win the Cold War, and now America is honoring your service with FREE in-home health care from Professional Case Management.

Medical Benefits Identification Card for JOHN Q. PATRIOT

IF YOU HAVE THIS CARD YOU MAY QUALIFY FOR FREE IN-HOME MEDICAL CARE

Specializing in care for former Nuclear & Uranium workers for over 10 years

National DOL/EEIOCPA/RECA benefit program expert

Strict hiring guidelines ensure only the best and most experienced local nurses care for you

PM Professional Case Management

Helping Nuclear Workers Live at Home

Contact us to see if you qualify 1.855.CARE.2.DAY

WWW.PROCASEMANAGEMENT.COM | (1.855.227.3232)