

# big E classifieds

Call in your ad at  
**874-2259**

Deadline: Monday @ 5 p.m.

Prepayment required.

Visa / MasterCard accepted.



## MEETINGS



**Clarendon Lodge #700 AF&M**  
Stated meeting: Second Mondays, 7:30 p.m. Refreshments at 6:30 p.m. Practice: Fourth Mondays, 7 p.m. Russell Estlack - W.M., Grett Betts - Secretary, 2 B 1, ASK 1



**Donley County Memorial Post**  
7782 Veterans of Foreign Wars. Meets first Tuesday at 7 p.m. 822-VETS.



**Clarendon Lions Club** Regular meeting each Tuesday at noon. Scarlet Estlack, Boss Lion. Roger Estlack, Secretary



**Clarendon Alcoholics Anonymous Group** 806-676-9416, 806-661-1015, 24 hour hotline 806-329-3088. Mon., Thurs., & Satur. 7 p.m. 416 S Kearney St.

**Clarendon Chamber of Commerce** Regular meeting 1st Thursday each month at 6:00 p.m. at the Clarendon Visitor Center.

## Big E Meeting Listings

only \$8.50 per month. Call 874-2259 to have your club or organization meeting listed.

## HELP WANTED

**BEST WESTERN PLUS RED RIVER INN** is taking applications for a Housekeeping Attendant. Competitive starting wage. Raises based on performance. Pool and fitness center privileges. Paid vacation. One meal and uniforms provided. Hours are generally 8am to 3pm five days a week. Please apply in person.

## JOB OPENING

**Business Office Manager  
Palo Duro Nursing Home in Claude**

Currently hiring for a Business Office Manager. Duties include accounts payable, accounts receivable, payroll, Medicare and Medicaid billing and resident trust fund. Previous experience is preferred but not required. Please inquire by calling 806-226-5121



Nursing Home  
Claude, TX 79019

**NOW HIRING!**  
Full-Time / Day Shift

## Licensed Vocational Nurse

**\$2,000 Sign - On Bonus  
For FULL TIME positions**

Shift Differentials - Nights & Weekends

**We Offer Excellent Wages  
Benefits Available**

Please send resume or request application to:

[Blackson@paloduronursing.com](mailto:Blackson@paloduronursing.com)

Contact: Becky Jackson, H/R Director

Call: 806/226-5121

## FOR SALE

### FALL SEED AVAILABLE

We will have beardless wheat, TAM 204, SY Razor, OK Corral NEW!, Beardless Triticale, & 813.

We have additional beardless wheat, bearded wheat, and beardless triticale and Elbon rye. Call 800-299-9273 or 806-258-7394. Gayland Ward Seed, Hereford, Texas.

## SERVICES

NEED A MINISTER? Call 205-1015.

• **ROTOTILLING**  
• **Brush Hogging**  
• **Mowing**  
**Jobs Services**  
**806-205-0270**

## ANNOUNCEMENTS

**FACILITIES AVAILABLE** - Family Reunions, Receptions, Business Meetings, Club Functions, and more. Clarendon Lions Hall, 111 W. Fourth. Call 874-2259 for rental information.

### Saints' Roost Museum

610 East Harrington

Tuesday - Saturday

10 a.m. to 5 p.m.

Open for appointments.

Call 874-2746.

## PUBLIC NOTICE

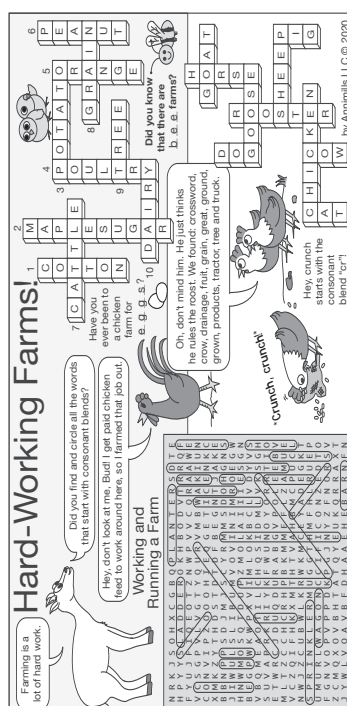
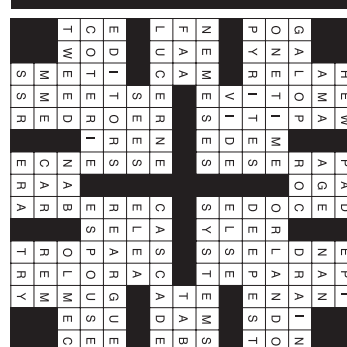
### SMALL TAXING UNIT NOTICE

The Donley County Hospital District board of directors will hold a meeting at 6:00 p.m. on September 15, 2020 at 3 Medical Drive Clarendon Texas 79226 to consider adopting a proposed tax rate for tax year 2020. The proposed tax rate is 0.143 per \$100 of value.

**GREENBELT MUNICIPAL & INDUSTRIAL WATER AUTHORITY** will be accepting bids on a dry boat storage building to be metal (122' x 30' x 12') with 6" concrete floor. For details contact Bobbie K. Kidd at 806-874-3650. Bids will be opened on Tuesday, September 15, 2020 at 11:00 a.m.

**Need To  
Sell It ?**  
Call 874-2259 Today!

## PUZZLE SOLUTION



## REAL ESTATE



Lewis Whitaker, Broker  
Lee Whitaker, Broker

Office 806.356.6100  
Fax 806.356.6517

4600 I-40 West Suite 101  
Amarillo, Texas 79106

[www.whitakerrealestate.com](http://www.whitakerrealestate.com)



## SERVICES



TexSCAN Week of  
August 30, 2020

### ACREAGE

**Hunting/investment/recreational property.** We have some of the best in Texas! From the Hill Country (Edwards, Menard, Coke, Val Verde County, free ranging exotics) to South Texas (Kinney, Duval, Live Oak County, whitetail, hogs). Large or small acreage. 30-year fixed rate owner financing, only 5% down. Call toll-free or email for individual prices and terms, [www.ranchenterprisesltd.com](http://www.ranchenterprisesltd.com), 800-876-9720.

### AUCTIONS

**Retirement Auction, Wed., Sept. 9,** starts @ 9:12 a.m., 665 N. 150 Road, Mounds, OK 74047. Auction will have 2 rings. Tractor, trailers, Yamaha Wolverine side by side, shop tools, farm equip., lawn mower, high-end western furniture, player piano, antiques & collectibles and more. Lots 251-379 are offered online - simulcast bidding begins at 12:37 p.m. For full terms, photos and updates visit [chuppsauction.com](http://chuppsauction.com), 918-630-0495.

**V & V Machine Shop Auction,** 2915 S. Zarramora St., Bldg. N, San Antonio, TX. Bid live online or in person Sat., Sept. 12, 10 a.m. View: Fri. Sept. 11, 10 a.m.-4 p.m.; sale day 8-10 a.m. 335 Lots - Milling Machines, Lathes, Drill Bits, Welder, & More. Bring folding chair. See website for details: [www.siskauction.com](http://www.siskauction.com), 361-456-7771. 10%/12% Buyers Premium, John Sisk Auctioneers, Inc. Txs #7425

**Halliburton Real Estate Auctions** - Texas Auctions Oct. 7. Locations Include Industrial, Warehouse, Office & Land Properties in Brownfield, Odessa & Sonora. Buildings Open: 11-2 p.m. Fri. Aug. 28 & Sept. 11. All Sell Without Reserve. TX Jeffrey Michael Ashby RE LIC 550021; Thomas E. Barnes III AUC LIC 6457. Call 800-801-8003, [williamsauction.com/halliburton](http://williamsauction.com/halliburton).

### GENERATORS

**GENERAC Standby Generators.** The weather is increasingly unpredictable. Be prepared for power outages. FREE 7-year extended warranty (\$695 value!). Schedule your FREE in-home assessment today. Call 1-855-704-8579. Special financing for qualified customers.

### INTERNET

**AT&T Internet.** Starting at \$40/month w/12-mo agmt. Includes 1 TB of data per month. Get More For Your High-Speed Internet Thing. Ask us how to bundle and SAVE! Geo & svc restrictions apply. Call us today 1-855-439-5457.

### LOG HOMES

**Log Homes** - 4 Log Home kits selling for balance owed, free delivery. Model #101 Carolina, bal. \$17,000; Model #203 Georgia, bal. \$19,950; Model #305 Biloxi, bal. \$14,500; Model #403 Augusta, bal. \$16,500. View plans at [www.loghomedream.com](http://www.loghomedream.com).

### OIL AND GAS RIGHTS

**We buy oil, gas & mineral rights.** Both non-producing and producing including non-Participating Royalty Interest (NPRI). Provide us your desired price for an offer evaluation. 806-620-1422, [LoboMineralsLLC@gmail.com](mailto:LoboMineralsLLC@gmail.com). Lobo Minerals, LLC, PO Box 1800, Lubbock, TX 79408-1800.

### MEDICAL

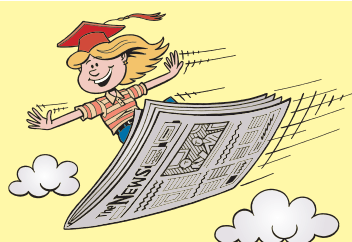
**Life Alert.** One press of a button sends help FAST. 24/7! At home and on the go. Mobile Pendant with GPS. FREE First Aid Kit (with subscription). CALL 844-831-1525. FREE Brochure.

**DENTAL INSURANCE** from Physicians Mutual Insurance Company. NOT just a discount plan. REAL coverage for 350 procedures. Call 1-855-901-0467 for details. [www.dental50plus.com/txpress](http://www.dental50plus.com/txpress). 6118-0219

**Texas Press Statewide Classified Network**  
273 Participating Texas Newspapers • Regional Ads  
Start At \$250 • Email [ads@texaspress.com](mailto:ads@texaspress.com)

NOTICE: While most advertisers are reputable, we cannot guarantee products or services advertised. We urge readers to use caution and when in doubt, contact the Texas Attorney General at 800-621-0508 or the Federal Trade Commission at 877-FTC-HELP. The FTC web site is [www.ftc.gov/bizop](http://www.ftc.gov/bizop).

THIS FUN PAGE IS SPONSORED BY OUR NEWSPAPERS IN EDUCATION PARTNER:



We like to visit farms to pick...

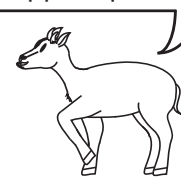


**Newspaper Fun!**  
[www.readingclubfun.com](http://www.readingclubfun.com)



Annimills LLC © 2020 V16-34

...apples, pears and pumpkins.

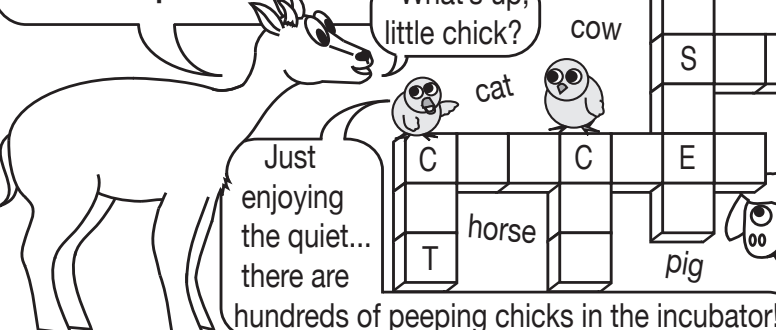


Kids:  
color  
stuff  
in!



## Hard-Working Farms!

Farming is a lot of hard work. Farmers need to think about the condition of the soil, the weather, caring for plants or animals, harvesting, shipping and selling products at the market. The days are long! Check out my two cool farm crossword puzzles.



1. Lots of animals live on farms. Can you place the names of farm animals scattered in the puzzle above into the puzzle frame?

2. Read the clues below to fill in the crossword on the right with different kinds of farms.

- grown for clothing, bedding
- tap tree sap to make syrup, candy
- vegetable grown in the ground; has "eyes"
- turkey, chicken
- in warm areas, fruit, juice
- used for "butter," oils
- animals for beef
- wheat, corn, oats
- for yards, forests, Christmas
- cows, milk, cheese, butter

Every day we can crow about all the hard work our Moms and Dads do to keep our families running smoothly.

Can anyone see where Chitter is working?

Oh, it's a machine used in a field to cut wheat or corn.

Did you know that there are \_\_\_\_\_ farms?



Do you know what a "combine" is?

Hey, hay! Hey! You found me!

Can you find and circle 5 words that are spelled with "ee" and have the long "e," or "ee" sound?

\_\_\_\_\_

\_\_\_\_\_

\_\_\_\_\_

\_\_\_\_\_

\_\_\_\_\_

Have you ever been to a chicken farm for \_\_\_\_\_?

g s  
e g

Use the word list below if you get stuck!

dairy  
cattle  
orange  
potato  
grain  
tree  
maple sugar  
peanut  
poultry  
cotton

★ A **combine** also separates and gathers seeds from the plants!